

FIFTEEN FACTORS RELATED TO THE AVERAGE MONTHLY DURATION OF SUNLIGHT IN FOREST RED MILLIPEDES *CENTROBOLUS COOK*, 1897

M. Cooper

University of the Witwatersrand, Johannesburg, South Africa.

Abstract- Fifteen factors were tested for a correlation with the average monthly duration of sunlight in red millipedes *Centrobolus*. Hours of sunshine throughout the year was related to average monthly duration of sunlight ($r=0.93310143$, Z score= 7.33102145 , $r^2=0.8688$, $n=22$, $p=0$). Average monthly duration of sunlight was related to longitude ($r=0.6864$, $r^2=0.4711$, $n=22$, $p=0.000424$). Average monthly duration of sunlight was related to precipitation ($r=-0.7672$, $r^2=0.5886$, $n=22$, $p=0.000031$). Average monthly duration of sunlight was related to minimum temperature ($r=0.5702$, $r^2=0.3251$, $n=22$, $p=0.005614$). Average monthly duration of sunlight was related to temperature ($r=0.5219$, $r^2=0.2724$, $n=22$, $p=0.012706$). Average monthly duration of sunlight was related to lowest daily hours of sunshine ($r=0.87035736$, Z score= 5.81717529 , $r^2=0.7548$, $n=22$, $p=0$). Average monthly duration of sunlight was related to curved surface area in females ($r=-0.4336$, $r^2=0.188$, $n=22$, $p=0.043582$). Average monthly duration of sunlight was marginally related to curved surface area in males ($r=-0.4206$, $r^2=0.1769$, $n=22$, $p=0.051035$). Average monthly duration of sunlight was related to curved surface area ($r=-0.4071$, $r^2=0.1657$, $n=22$, $p=0.00611$). Average monthly duration of sunlight was related to surface area ($r=-0.39537025$, Z score= -2.67746254 , $r^2=0.1563$, $n=22$, $p=0.00370915$). Average monthly duration of sunlight was related to length ($r=-0.39379655$, Z score= -2.66552773 , $r^2=0.2381$, $n=22$, $p=0.00384342$). Average monthly duration of sunlight was related to highest total hours of sunshine in a month ($r=-0.6016$, $r^2=0.3619$, $n=22$, $p=0.003033$). Average monthly duration of sunlight was related to maximum temperature ($r=-0.447$, $r^2=0.1998$, $n=22$, $p=0.037006$). Average monthly duration of sunlight was related to volume ($r=-0.4389$, $r^2=0.1926$, $n=22$, $p=0.040953$). Minimum ocean water temperature was related to average monthly duration of sunlight ($r=-0.84285802$, Z score= -3.01522781 , $n=9$, $p=0.001284$). Mean ocean water temperature was related to average monthly duration of sunlight ($r=-0.85467114$, Z score= -3.11876809 , $n=9$, $p=0.00090811$). Mating frequency was related to average monthly duration of sunlight ($r=-0.92554221$, Z score= -5.86394325 , $n=16$, $p=0$).

Keywords: precipitation, Red Millipedes, sunshine.

I. INTRODUCTION

Red millipedes are found in the southern African subregion with northern limits on the east coast being about -17° latitude S and southern limits being -35° latitude S. They are well represented in the littoral forests of the eastern half of the subcontinent [1-427]. It consists of

taxonomically important species with 12 species considered threatened and includes nine vulnerable and three endangered species [427]. It occurs in all the forests of the coastal belt from the Cape Peninsula to Beira in Mocambique [426]. These worm-like millipedes have female-biased sexual size dimorphism [57]. Here, fifteen factors are correlated with average monthly duration of sunlight in *Centrobolus Cook*, 1897.

II. MATERIALS AND METHODS

Horizontal tergite width measurements for 22 species of southern African *Centrobolus* were obtained from published material [57]. These were halved to get radii (r). The surface areas (mm^2) were calculated based on the equation $2 \cdot \pi \cdot r \cdot (r + h)$ for males and females. A correlation between fifteen factors and average monthly duration of sunlight was generated at <https://www.gigacalculator.com/calculators/correlation-coefficient-calculator.php> and <https://www.socscistatistics.com/tests/pearson/default2.aspx> (Appendix 1-17).

III. RESULTS

Hours of sunshine throughout the year was related to average monthly duration of sunlight (Fig. 1: $r=0.93310143$, Z score= 7.33102145 , $r^2=0.8688$, $n=22$, $p=0$).

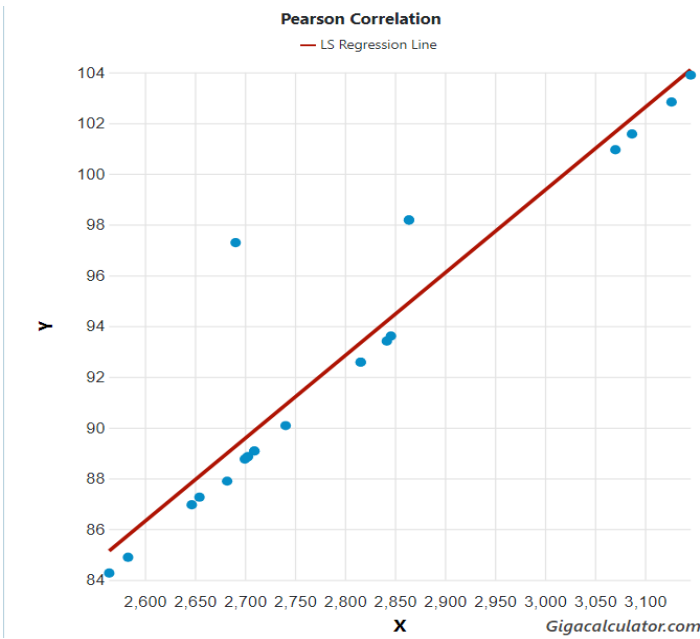


Fig. 1. Correlation between hours of sunshine throughout the year (h) and average monthly duration of sunlight across therange of *Centrobolus* Cook, 1897.

Average monthly duration of sunlight was related to longitude (Fig. 1: $r = 0.6864$, $r^2 = 0.4711$, $n = 22$, $p = 0.000424$).

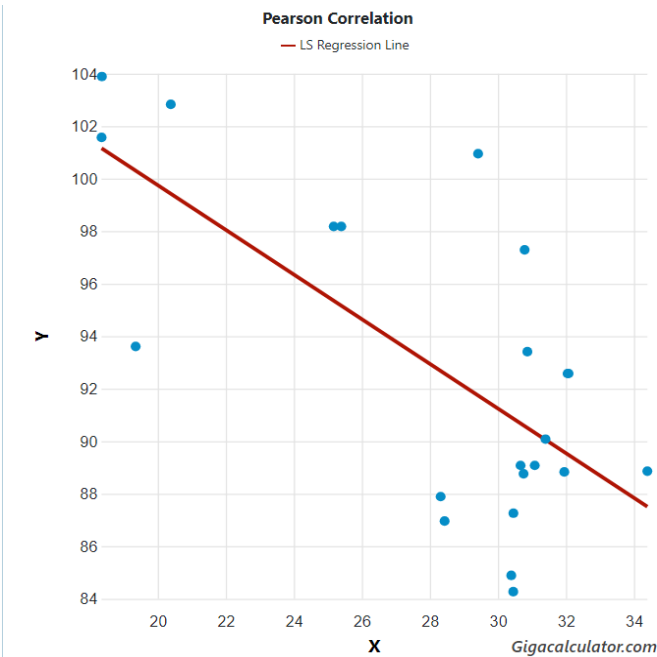


Fig. 2. Correlation between average monthly duration of sunlight (h) and longitude across therange of *Centrobolus* Cook, 1897.

Average monthly duration of sunlight was related to precipitation (Fig. 3: $r = -0.7672$, $r^2 = 0.5886$, $n = 22$, $p = 0.000031$).

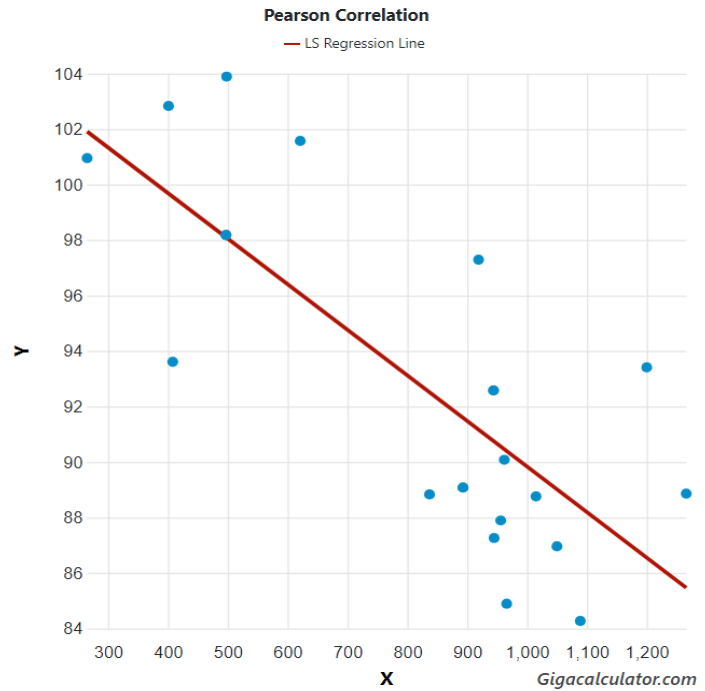


Fig. 3. Correlation between average monthly duration of sunlight (h) and precipitation across therange of *Centrobolus* Cook, 1897.

Average monthly duration of sunlight was related to minimum temperature (Fig. 4: $r = -0.5702$, $r^2 = 0.3251$, $n = 22$, $p = 0.005614$).

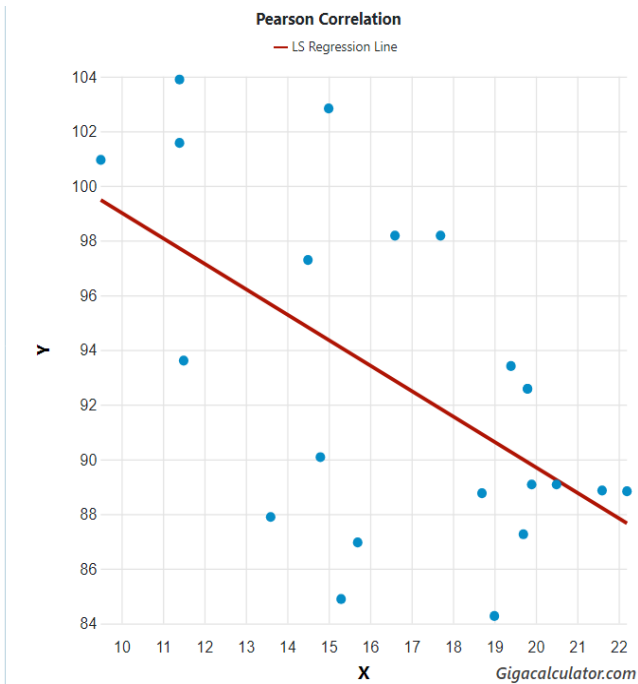


Fig. 4. Correlation between average monthly duration of sunlight (h) and minimum temperature across the range of *Centrobolus Cook, 1897.*

Average monthly duration of sunlight was related to temperature (Fig. 5: $r = -0.5219$, $r^2 = 0.2724$, $n = 22$, $p = 0.012706$).

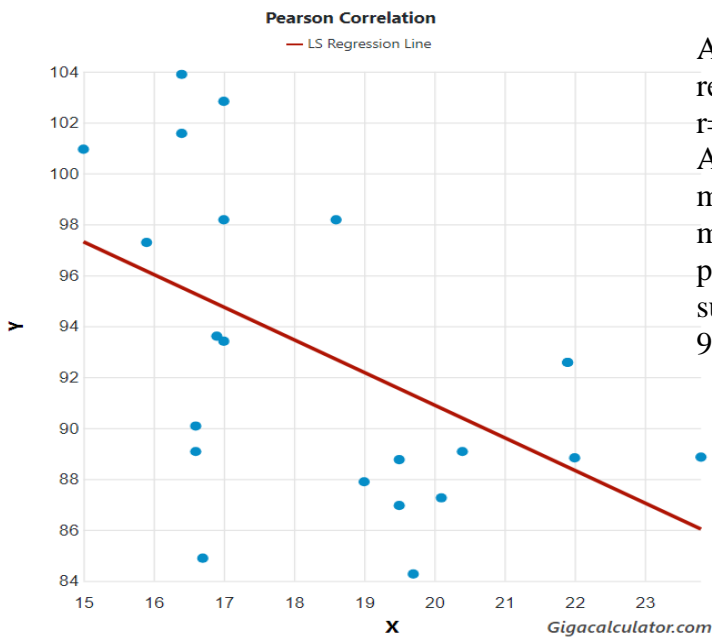


Fig. 5. Correlation between average monthly duration of sunlight (h) and temperature across the range of *Centrobolus Cook, 1897.*

Average monthly duration of sunlight was related to lowest daily hours of sunshine (Fig. 6: $r = 0.87035736$, $Z \text{ score} = 5.81717529$, $r^2 = 0.7548$, $n = 22$, $p = 0$).

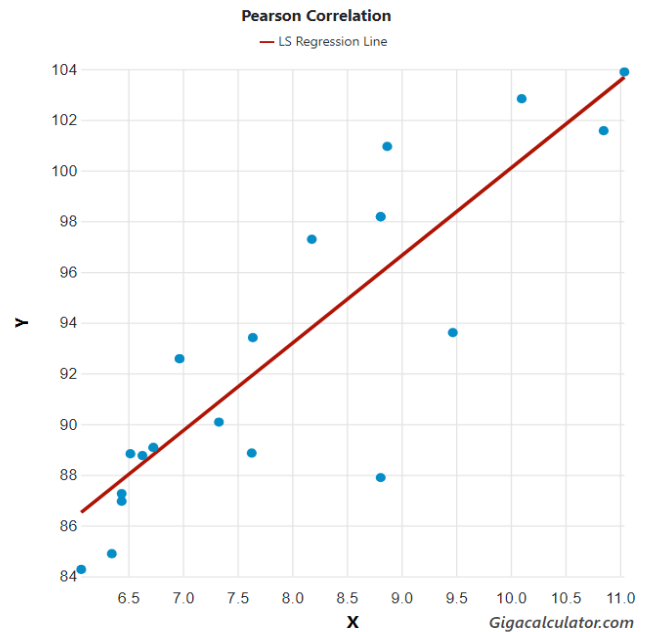


Fig. 6. Correlation between average monthly duration of sunlight (h) and lowest daily hours of sunshine across the range of *Centrobolus Cook, 1897.*

Average monthly duration of sunlight was related to curved surface area in females (Fig. 7: $r = -0.4336$, $r^2 = 0.188$, $n = 22$, $p = 0.043582$). Average monthly duration of sunlight was marginally related to curved surface area in males (Fig. 8: $r = -0.4206$, $r^2 = 0.1769$, $n = 22$, $p = 0.051035$). Average monthly duration of sunlight was related to curved surface area (Fig. 9: $r = -0.4071$, $r^2 = 0.1657$, $n = 22$, $p = 0.00611$).



Fig. 7. Correlation between average monthly duration of sunlight (h) and curved surface area in females across the range of *Centrobolus* Cook, 1897.

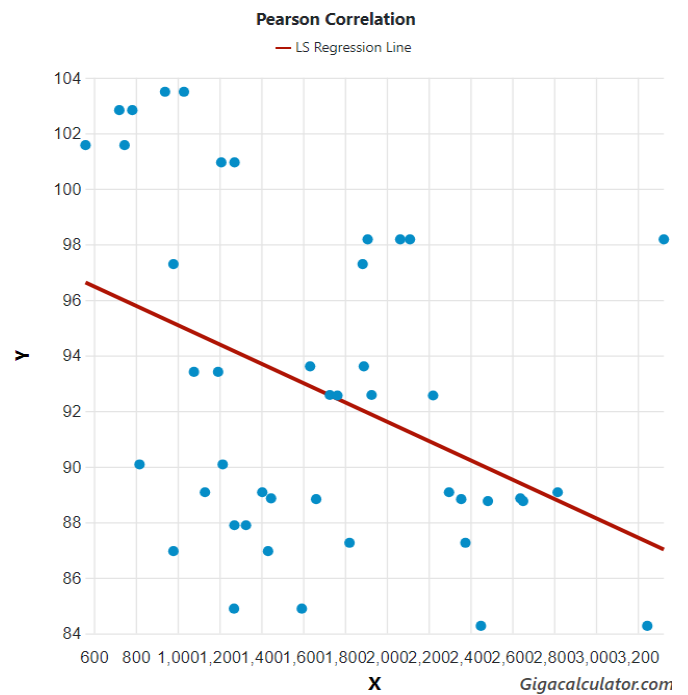


Fig. 9. Correlation between average monthly duration of sunlight (h) and curved surface area across the range of *Centrobolus* Cook, 1897.

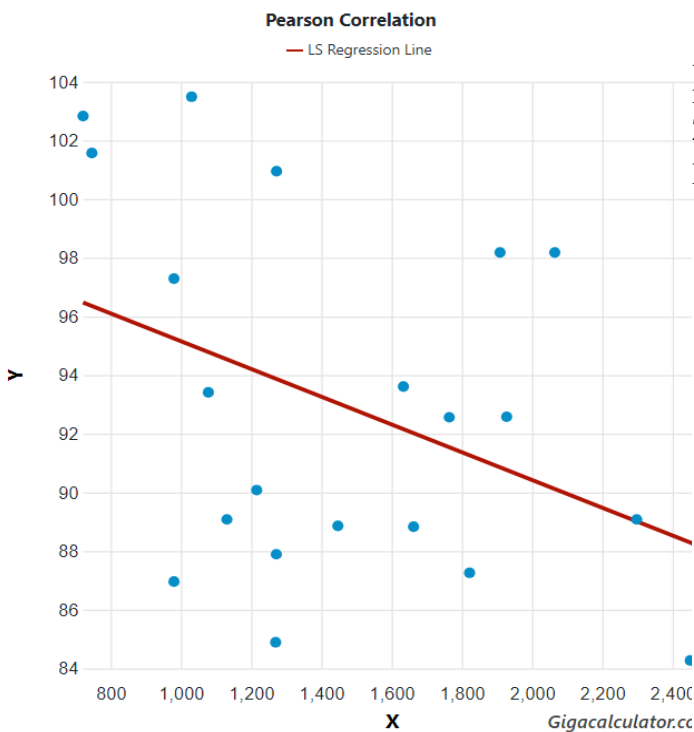


Fig. 8. Correlation between average monthly duration of sunlight (h) and curved surface area in males across the range of *Centrobolus* Cook, 1897.

Average monthly duration of sunlight was related to surface area (Fig. 10: $r = -0.39537025$, Z score $= -2.67746254$, $r^2 = 0.1563$, $n = 22$, $p = 0.00370915$).

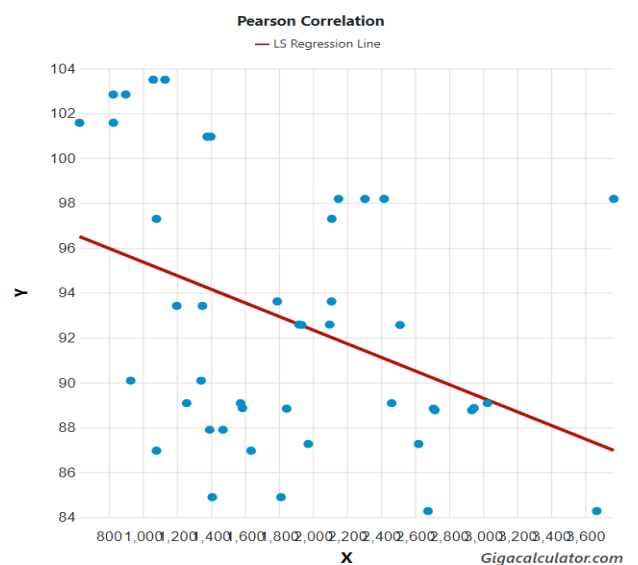


Fig. 10. Correlation between average monthly duration of sunlight (h) and surface area in females across the range of *Centrobolus* Cook, 1897.

Average monthly duration of sunlight was related to length (Fig. 11: $r=-0.39379655$, Z score= -2.66552773 , $r^2=0.2381$, $n=22$, $p=0.00384342$).

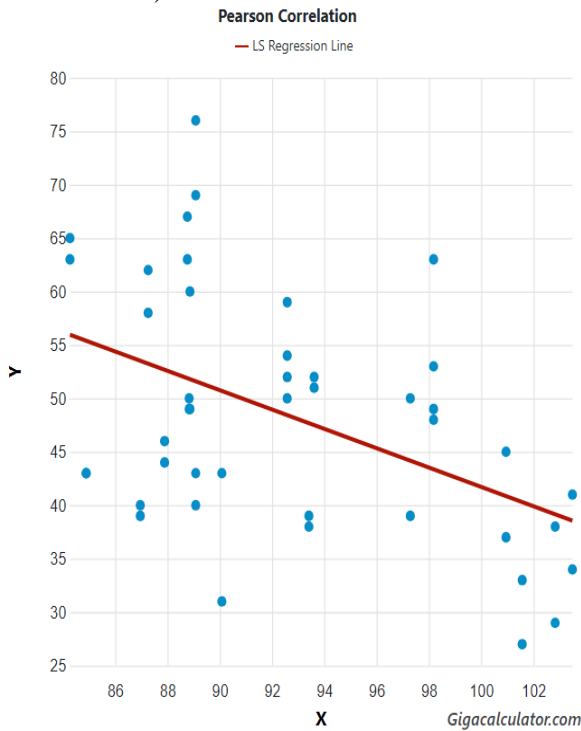


Fig. 11. Correlation between average monthly duration of sunlight (h) and length across the range of *Centrobolus* Cook, 1897.

Average monthly duration of sunlight was related to highest total hours of sunshine in a month (Fig. 12: $r=-0.6016$, $r^2=0.3619$, $n=22$, $p=0.003033$).

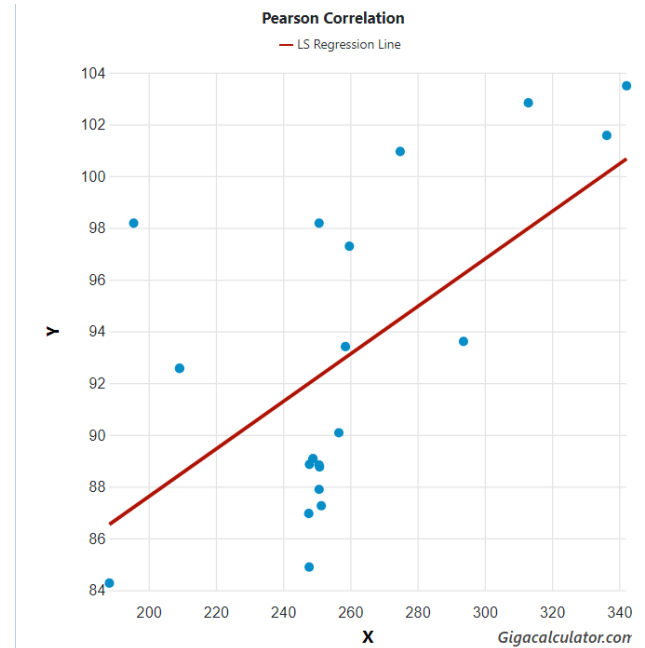


Fig. 12. Correlation between average monthly duration of sunlight (h) and highest total hours of sunshine in a month in females across the range of *Centrobolus* Cook, 1897.

Average monthly duration of sunlight was related to maximum temperature (Fig. 13: $r=-0.447$, $r^2=0.1998$, $n=22$, $p=0.037006$).

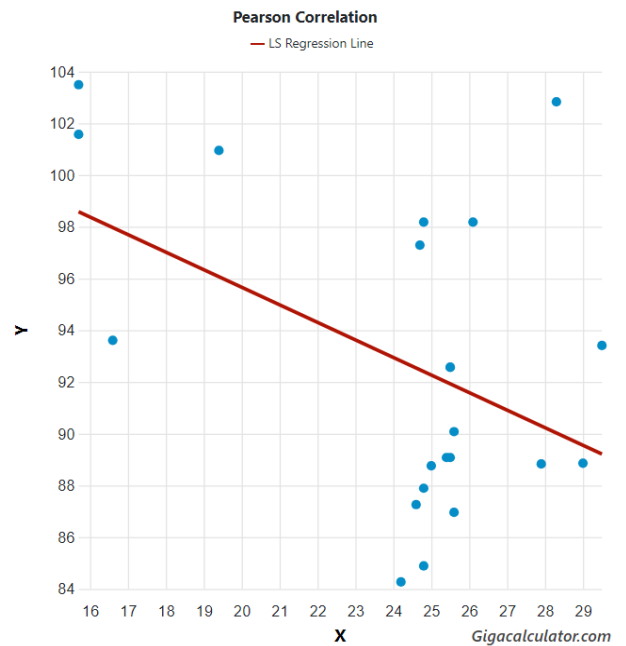


Fig. 13. Correlation between average monthly duration of sunlight (h) and maximum temperature across the range of *Centrobolus* Cook, 1897.

Average monthly duration of sunlight was related to volume (Fig. 14: $r = -0.4389$, $r^2 = 0.1926$, $n = 22$, $p = 0.040953$).

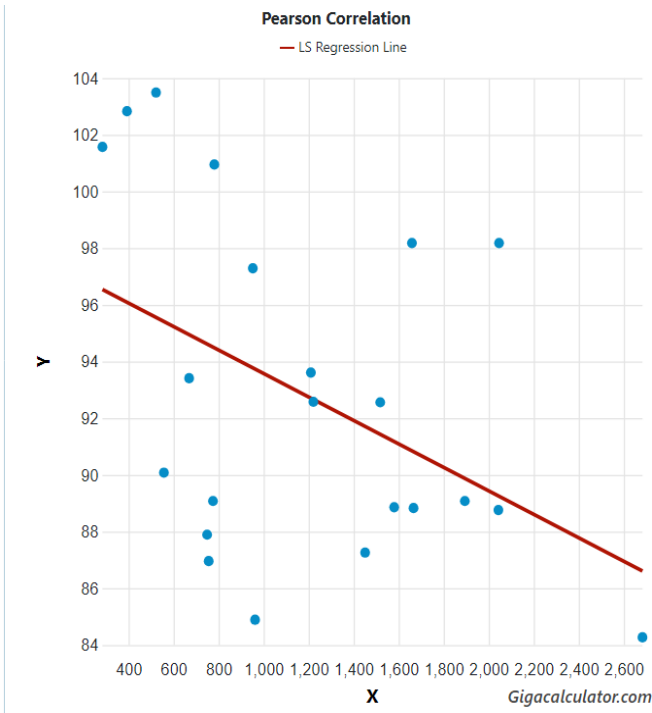


Fig. 14. Correlation between average monthly duration of sunlight (h) and volume across the range of *Centrobolus Cook, 1897*.

Minimum ocean water temperature was related to average monthly duration of sunlight (Fig. 15: $r = -0.84285802$, $Z \text{ score} = -3.01522781$, $n = 9$, $p = 0.001284$).

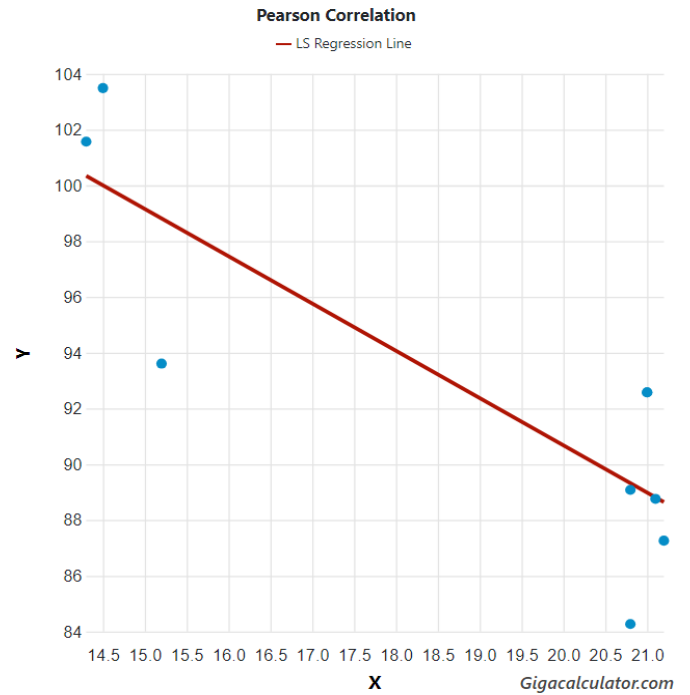


Fig. 15. Correlation between minimum ocean water temperature and average monthly duration of sunlight in *Centrobolus Cook, 1897*.

Mean ocean water temperature was related to average monthly duration of sunlight (Fig. 16: $r = -0.85467114$, $Z \text{ score} = -3.11876809$, $n = 9$, $p = 0.00090811$).

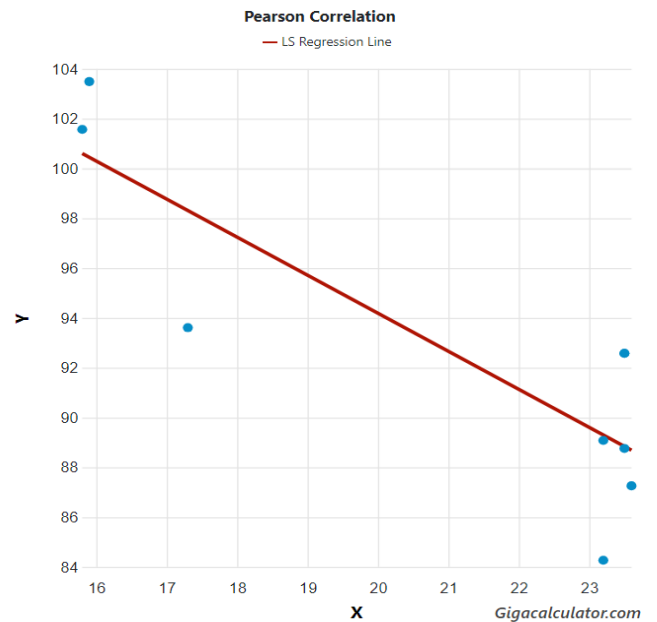


Fig. 16. Correlation between mean ocean water temperature and average monthly duration of sunlight in *Centrobolus* Cook, 1897.

Mating frequency was related to average monthly duration of sunlight (Fig. 17: $r=-0.92554221$, $Z \text{ score}=-5.86394325$, $n=16$, $p=0$).

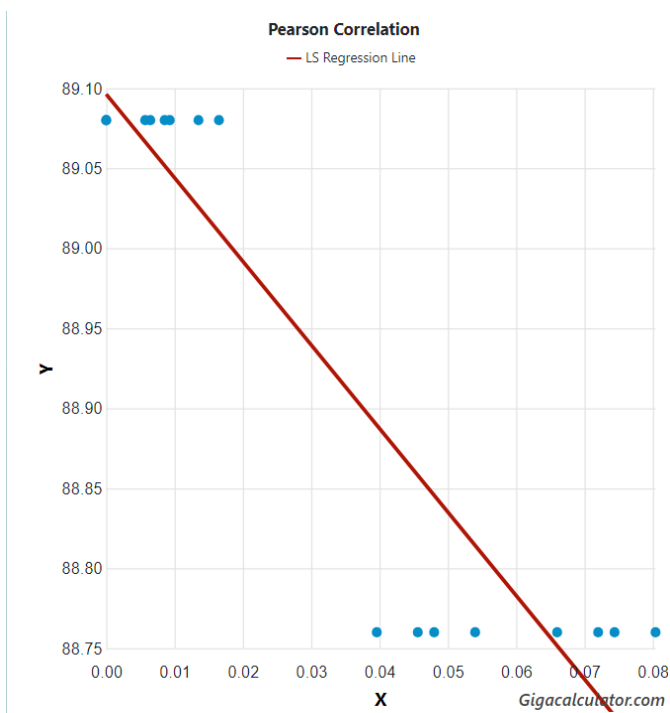


Fig. 17. Correlation between mating frequency and average monthly duration of sunlight in *Centrobolus* Cook, 1897.

IV. DISCUSSION

There is a correlation between fifteen factors and average monthly duration of sunlight.

REFERENCES

- O. F. Cook, "New relatives of *Spirobolus giganteus*," *Brandtia* (A series of occasional papers on Diplopoda and other Arthropoda), vol. 18, pp. 73-75, 1897.
- M. COOPER, "Sperm competition in the millipede *Chersastus ruber* (Diplopoda: Pachybolidae)," The University of Cape Town, pp. 1-29, 1995.
- M. I. Cooper, S. R. Telford, "Sperm competition in three *Chersastus* millipedes (Diplopoda, Trigonulidae)," 26th Symposium of the Zoological Society of Southern Africa (Integrating Zoology: Subdisciplines and the

- Subcontinent), University of Pretoria, Pretoria, 8-12 July, p. 13, 1996. ISBN: 1-86854-059-6..
- M. I. Cooper, "Ectoparasite-mediated sexual selection in spirobolid millipedes," In: Robertson, Hamish (ed.) Proceedings of the joint congress of the Entomological Society of Southern Africa (11th congress) and the African Association of Insect Scientists (12th congress), Stellenbosch, 30 June-4 July, pp. 223-224, 1997. ISBN : WISC:89058769605. (poster).
- M. I. Cooper, "Indiscriminate male mating behaviour in spirobolid millipedes," 27th Symposium of the Zoological Society of Southern Africa, University of Cape Town, Cape Town, 7-11 July, p. 105, 1997.
- M. Cooper, "MILLIPEDES AND THE "MINIATURE FIVE MILLION"," *African Wildlife*, vol. 52, no. 5, pp. 30-31, 1998..
- M. I. COOPER, "MATING DYNAMICS OF SOUTH AFRICAN FOREST MILLIPEDES *CENTROBOLUS* (DIPLOPODA: PACHYBOLIDAE)," THE UNIVERSITY OF CAPE TOWN, pp. 1-141, 1998. <https://hdl.handle.net/11427/17555>.
- M. Cooper, "Sexual selection in sympatric spirobolid millipedes," 28th Symposium of the Zoological Society of Southern Africa, University of Cape Town, 1998. (poster).
- M. I. Cooper, M. A. du Plessis, "Biodiversity hotspots in the developing world," *Trends in Ecology & Evolution*, vol. 13, no. 10, pp. 409, 1998. ISSN 0169-5347, [https://doi.org/10.1016/S0169-5347\(98\)01469-4](https://doi.org/10.1016/S0169-5347(98)01469-4).
- M. Cooper, "P2 or not P2?" 29th Symposium of the Zoological Society of Southern Africa, University of the North, Limpopo Province, July, 1999. (poster).
- M. I. Cooper, S. R. Telford, "Copulatory Sequences and Sexual Struggles in Millipedes," *Journal of Insect Behavior* vol. 13, pp. 217-230, 2000. <https://doi.org/10.1023/A:1007736214299>.
- M. I. Cooper, "Sex ratios, mating frequencies and relative abundance of sympatric millipedes in the genus *Chersastus* (Diplopoda: Pachybolidae)," *Arthropods*, vol. 3, no. 4, pp. 174-176, 2014.
- M. I. Cooper, "Sexual size dimorphism and corroboration of Rensch's rule in *Chersastus* millipedes (Diplopoda: Pachybolidae)," *J. Entomol. Zool. Stud.* vol. 2, no. 6, pp. 264-266, 2014. DOI: 10.22271/j.ento.2014.v2.i6e.452 <http://www.entomoljournal.com/archives/2014/vol2issue6/PartE/47.pdf>.
- M. I. Cooper, "Competition affected by re-mating interval in a myriapod," *J. Entomol. Zool. Stud.* vol. 3, no. 4, pp. 77-78, 2015. DOI: 10.22271/j.ento.2015.v3.i4b.550 <http://www.entomoljournal.com/archives/2015/vol3issue4/PartB/3-4-3.pdf>.
- M. I. Cooper, "Elaborate gonopods in the myriapod genus *Chersastus* (Diplopoda: Trigonulidae)," *J. Entomol. Zool. Stud.* vol. 3, no. 4, pp. 235-238, 2015. DOI: 10.22271/j.ento.2015.v3.i4d.573 <http://www.entomoljournal.com/archives/2015/vol3issue4/PartD/3-3-110.pdf>.

16. M. I. Cooper, "Sperm storage in *Centrobolus* spp. and observational evidence for egg simulation," *J. Entomol. Zool. Stud.* vol. 4, no. 1, pp. 127-129, 2016. DOI: 10.22271/j.ento.2016.v4.i1b.797
<https://www.entomoljournal.com/archives/2016/vol4issue1/PartB/3-6-81.pdf>.
17. M. I. Cooper, "Symmetry in ejaculate volumes of *Centrobolus inscriptus* Attems (Spiroboloidea: Trigoniulidae)," *International Journal of Entomological Research*, vol. 1, no. 2, pp. 14-15, 2016.
<http://www.entomologyjournals.com/archives/2016/vol1/issue2>.
18. M. I. Cooper, "Confirmation of four species of *Centrobolus* Cook (Spirobolida: Trigoniulidae) based on gonopod ultrastructure," *Int. J. Entomol. Res.* vol. 1, no. 3, pp. 07-09, 2016.
<http://www.entomologyjournals.com/archives/2016/vol1/issue3>.
19. M. I. Cooper, "Fire millipedes obey the female sooner norm in cross mating *Centrobolus* (Myriapoda)," *J. Entomol. Zool. Stud.* vol. 4, no. 1, pp. 173-174, 2016. DOI: 10.22271/j.ento.2016.v4.i1c.802
<http://www.entomoljournal.com/archives/2016/vol4issue1/PartC/3-5-82.pdf>.
20. M. I. Cooper, "Symmetry in ejaculate volumes of *Centrobolus inscriptus* Attems (Spiroboloidea: Trigoniulidae)," *J. Entomol. Zool. Stud.* vol. 4, no. 1, pp. 386-387, 2016. DOI: 10.22271/j.ento.2016.v4.i1f.833
<http://www.entomoljournal.com/archives/2016/vol4issue1/PartF/4-1-21.pdf>.
21. M. I. Cooper, "Instantaneous insemination in the millipede *Centrobolus inscriptus* (Spirobolida: Trigoniulidae) determined by artificially-terminated mating," *J. Entomol. Zool. Stud.* vol. 4, no. 1, pp. 487-490, 2016. DOI: 10.22271/j.ento.2016.v4.i1g.847
<http://www.entomoljournal.com/archives/2016/vol4issue1/PartG/4-1-50-695.pdf>.
22. M. I. Cooper, "Gonopod mechanics in *Centrobolus* Cook (Spirobolida: Trigoniulidae) II. Images," *J. Entomol. Zool. Stud.* vol. 4, no. 2, pp. 152-154, 2016. DOI: 10.22271/j.ento.2016.v4.i2c.890
<http://www.entomoljournal.com/archives/2016/vol4issue2/PartC/4-2-55.pdf>.
23. M. I. Cooper, "Post-insemination associations between males and females in Diplopoda," *J. Entomol. Zool. Stud.* vol. 4, no. 2, pp. 283-285, 2016. DOI: 10.22271/j.ento.2016.v4.i2d.908
<http://www.entomoljournal.com/archives/2016/vol4issue2/PartD/4-2-63.pdf>.
24. M. I. Cooper, "Heavier-shorter-wider females in the millipede *Centrobolus inscriptus* Attems (Spirobolida: Trigoniulidae)," *J. Entomol. Zool. Stud.* vol. 4, no. 2, pp. 509-510, 2016. DOI: 10.22271/j.ento.2016.v4.i2g.937
<http://www.entomoljournal.com/archives/2016/vol4issue2/PartG/4-3-60.pdf>.
25. M. I. Cooper, "Sexual bimaturism in the millipede *Centrobolus inscriptus* Attems (Spirobolida: Trigoniulidae)," *J. Entomol. Zool. Stud.* vol. 4, no. 3, pp. 86-87, 2016. DOI: 10.22271/j.ento.2016.v4.i3b.961
<http://www.entomoljournal.com/archives/2016/vol4issue3/PartB/4-3-44.pdf>.
26. M. I. Cooper, "Tarsal pads of *Centrobolus* Cook (Spiroboloidea: Trigoniulidae)," *J. Entomol. Zool. Stud.* vol. 4, no. 3, pp. 385-386, 2016. DOI: 10.22271/j.ento.2016.v4.i3f.1008
<http://www.entomoljournal.com/archives/2016/vol4issue3/PartF/4-3-40-751.pdf>.
27. M. I. Cooper, "Confirmation of four species of *Centrobolus* Cook (Spirobolida: Trigoniulidae) based on gonopod ultrastructure," *J. Entomol. Zool. Stud.* vol. 4, no. 4, pp. 389-391, 2016. DOI: 10.22271/j.ento.2016.v4.i4f.1065
<http://www.entomoljournal.com/archives/2016/vol4issue4/PartF/4-3-118-307.pdf>.
28. M. I. Cooper, "Sperm storage in *Centrobolus inscriptus* Attems (Spirobolida: Trigoniulidae)," *J. Entomol. Zool. Stud.* vol. 4, no. 4, pp. 392-393, 2016. DOI: 10.22271/j.ento.2016.v4.i4f.1066
<http://www.entomoljournal.com/archives/2016/vol4issue4/PartF/4-4-16-207.pdf>.
29. M. I. Cooper, "Sperm dumping in *Centrobolus inscriptus* Attems (Spirobolida: Trigoniulidae)," *J. Entomol. Zool. Stud.* vol. 4, no. 4, pp. 394-395, 2016. DOI: 10.22271/j.ento.2016.v4.i4f.1067
<http://www.entomoljournal.com/archives/2016/vol4issue4/PartF/4-4-17-663.pdf>.
30. M. I. Cooper, "Syncopulatory mate-guarding affected by predation in the aposematic millipede *Centrobolus inscriptus* in a swamp forest," *J. Entomol. Zool. Stud.* vol. 4, no. 6, pp. 483-484, 2016. DOI: 10.22271/j.ento.2016.v4.i6g.1376
<http://www.entomoljournal.com/archives/2016/vol4issue6/PartG/4-6-114-767.pdf>.
31. M. I. Cooper, "The relative sexual size dimorphism of *Centrobolus inscriptus* compared to 18 congeners," *J. Entomol. Zool. Stud.* vol. 4, no. 6, pp. 504-505, 2016. DOI: 10.22271/j.ento.2016.v4.i6g.1381
<http://www.entomoljournal.com/archives/2016/vol4issue6/PartG/4-6-123-254.pdf>.
32. M. I. Cooper, "Do females control the duration of copulation in the aposematic millipede *Centrobolus inscriptus*?" *J. Entomol. Zool. Stud.* vol. 4, no. 6, pp. 623-625, 2016. DOI: 10.22271/j.ento.2016.v4.i6i.1396
<http://www.entomoljournal.com/archives/2016/vol4issue6/PartI/4-6-133-214.pdf>.
33. M. I. Cooper, "The influence of male body mass on copulation duration in *Centrobolus inscriptus* (Attems)," *J. Entomol. Zool. Stud.* vol. 4, no. 6, pp. 804-805, 2016. DOI: 10.22271/j.ento.2016.v4.i6k.08
<http://www.entomoljournal.com/archives/2016/vol4issue6/PartK/4-6-166-899.pdf>.

34. M. I. Cooper, "Sexual conflict over the duration of copulation in *Centrobolus inscriptus* (Attems)," J. Entomol. Zool. Stud. vol. 4, no. 6, pp. 852-854, 2016. DOI: 10.22271/j.ento.2016.v4.i6l.04 <http://www.entomoljournal.com/archives/2016/vol4issue6/PartL/4-6-155-599.pdf>.
35. M. I. Cooper, "The affect of female body width on copulation duration in *Centrobolus inscriptus* (Attems)," J. Entomol. Zool. Stud. vol. 5, no. 1, pp. 732-733, 2017. DOI: 10.22271/j.ento.2017.v5.i1j.10 <http://www.entomoljournal.com/archives/2017/vol5issue1/PartJ/5-1-92-221.pdf>.
36. M. I. Cooper, "Size matters in myriapod copulation," J. Entomol. Zool. Stud. vol. 5, no. 2, pp. 207-208, 2017. DOI: 10.22271/j.ento.2017.v5.i2c.10 <http://www.entomoljournal.com/archives/2017/vol5issue2/PartC/4-6-108-171.pdf>.
37. M. I. Cooper, "Relative sexual size dimorphism in *Centrobolus digrammus* (Pocock) compared to 18 congenetics," J. Entomol. Zool. Stud. vol. 5, no. 2, pp. 1558-1560, 2017. DOI: 10.22271/j.ento.2017.v5.i2u.04 <http://www.entomoljournal.com/archives/2017/vol5issue2/PartU/5-2-199-639.pdf>.
38. M. I. Cooper, "Relative sexual size dimorphism in *Centrobolus fulgidus* (Lawrence) compared to 18 congenetics," J. Entomol. Zool. Stud. vol. 5, no. 3, pp. 77-79, 2017. DOI: 10.22271/j.ento.2017.v5.i3b.01 <http://www.entomoljournal.com/archives/2017/vol5issue3/PartB/5-2-198-656.pdf>.
39. Cooper, "Relative sexual size dimorphism *Centrobolus ruber* (Attems) compared to 18 congenetics," J. Entomol. Zool. Stud. vol. 5, no. 3, pp. 180-182, 2017. DOI: 10.22271/j.ento.2017.v5.i3c.07 <http://www.entomoljournal.com/archives/2017/vol5issue3/PartC/5-2-187-598.pdf>.
40. M. I. Cooper, "Copulation and sexual size dimorphism in worm-like millipedes," J. Entomol. Zool. Stud. vol. 5, no. 3, pp. 1264-1266, 2017. DOI: 10.22271/j.ento.2017.v5.i3r.03 available at <https://www.coursehero.com/file/56889696>.
41. M. I. Cooper, "Allometry of copulation in worm-like millipedes," J. Entomol. Zool. Stud. vol. 5, no. 3, pp. 1720-1722, 2017. DOI: 10.22271/j.ento.2017.v5.i3x.03 <http://www.entomoljournal.com/archives/2017/vol5issue3/PartX/5-3-233-698.pdf>.
42. M. Cooper, "Re-assessment of rensch's rule in *Centrobolus*," J. Entomol. Zool. Stud. vol. 5, no. 6, pp. 2408-2410, 2017. DOI: 10.22271/j.ento.2017.v5.i6ag.04 <http://www.entomoljournal.com/archives/2017/vol5issue6/PartAG/5-6-355-856.pdf>.
43. M. I. Cooper, "Allometry for sexual dimorphism in millipedes (Diplopoda)," J. Entomol. Zool. Stud. vol. 6, no. 1, pp. 91-96, 2018. DOI: 10.22271/j.ento.2018.v6.i1b.03 <http://www.entomoljournal.com/archives/2018/vol6issue1/PartB/5-6-327-547.pdf>.
44. M. I. Cooper, "Sexual dimorphism in pill millipedes (Diplopoda)," J. Entomol. Zool. Stud. vol. 6, no. 1, pp. 613-616, 2018. DOI: 10.22271/j.ento.2018.v6.i1i.03 <http://www.entomoljournal.com/archives/2018/vol6issue1/PartI/5-6-352-508.pdf>.
45. M. I. Cooper, "Sexual size dimorphism and the rejection of Rensch's rule in Diplopoda (Arthropoda)," J. Entomol. Zool. Stud. vol. 6, no. 1, pp. 1582-1587, 2018. DOI: 10.22271/j.ento.2018.v6.i1v.07 <http://www.entomoljournal.com/archives/2018/vol6issue1/PartV/5-6-290-837.pdf>.
46. M. I. Cooper, "Trigoniulid size dimorphism breaks Rensch," J. Entomol. Zool. Stud. vol. 6, no. 3, pp. 1232-1234, 2018. DOI: 10.22271/j.ento.2018.v6.i3.9.09 <http://www.entomoljournal.com/archives/2018/vol6issue3/PartQ/6-3-170-722.pdf>.
47. M. I. Cooper, "Volumes of *Centrobolus albitarsus* (Lawrence, 1967)," Int. J. Entomol. Res. vol. 3, no. 4, pp. 20-21, 2018. <http://www.entomologyjournals.com/archives/2018/vol3/issue4>.
48. M. Cooper, "A review of studies on the fire millipede genus *centrobolus* (diplopoda: trigoniulidae)," J. Entomol. Zool. Stud. vol. 6, no. 4, pp. 126-129, 2018. DOI: 10.22271/j.ento.2018.v6.i4.2.06 <http://www.entomoljournal.com/archives/2018/vol6issue4/PartC/6-3-87-275.pdf>.
49. M. Cooper, "*Centrobolus anulatus* (Attems, 1934) reversed sexual size dimorphism," J. Entomol. Zool. Stud. vol. 6, no. 4, pp. 1569-1572, 2018. DOI: 10.22271/j.ento.2018.v6.i4.13.16 <http://www.entomoljournal.com/archives/2018/vol6issue4/PartZ/6-4-277-483.pdf>.
50. M. Cooper, "Allometry in *Centrobolus*," J. Entomol. Zool. Stud. vol. 6, no. 6, pp. 284-286, 2018. DOI: 10.22271/j.ento.2018.v6.i6.3.07 <http://www.entomoljournal.com/archives/2018/vol6issue6/PartE/6-5-322-417.pdf>.
51. M. Cooper, "Centrobolus size dimorphism breaks Rensch's rule," Scholars' Press, Mauritius. pp. 1-48, 2018. ISBN: 978-3-659-83990-0. <https://www.academia.edu/77887053>.
52. M. Cooper, "Centrobolus size dimorphism breaks Rensch's rule," Arthropod., vol. 7, no. 3, pp. 48-52, 2018.
53. M. Cooper, "Centrobolus dubius (Schubart, 1966) Monomorphism," International Journal of Research Studies in Zoology, vol 4, no. 3, pp. 17-21, 2018. <http://arcjournals.org/pdfs/ijrsz/v4-i3/3.pdf>.
54. M. Cooper, "Centrobolus lawrencei (Schubart, 1966) monomorphism," Arthropod., vol. 7, no. 4, pp. 82-86, 2018. [http://www.iaees.org/publications/journals/arthropods/articles/2018-7\(4\)/Centrobolus-lawrencei-monomorphism.pdf](http://www.iaees.org/publications/journals/arthropods/articles/2018-7(4)/Centrobolus-lawrencei-monomorphism.pdf).

55. M. Cooper, "Confirmation of twenty-one species of *Centrobolus* Cook (Diplopoda: Pachybolidae) based on length and width data," 2018.
56. M. Cooper, "Centrobolus sagatinus sexual size dimorphism based on differences in horizontal tergite widths," *J. Entomol. Zool. Stud.* vol. 6, no. 6, pp. 275-277, 2018. DOI: 10.22271/j.ento.2018.v6.i6.3.05 <http://www.entomoljournal.com/archives/2018/vol6issue6/PartE/6-5-323-505.pdf>.
57. M. Cooper, "Centrobolus silvanus dimorphism based on tergite width," *Glob. J. Zool.* vol. 3, no. 1, pp. 003-005, 2018. <https://doi.org/10.17352/gjz.000010>.
58. M. Cooper, "A review on studies of behavioural ecology of *Centrobolus* (Diplopoda, Spirobolida, Pachybolidae) in southern Africa," *Arthropod.*, vol. 8, no. 1, pp. 38-44, 2019.
59. M. I. Cooper, "Lawrence's red millipede *Centrobolus lawrencei* shows length-based variability and size dimorphism," *J. Entomol. Zool. Stud.* vol. 7, no. 2, pp. 1037-1039, 2019. DOI: 10.22271/j.ento.2019.v7.i2.9.07 <http://www.entomoljournal.com/archives/2019/vol7issue2/PartQ/7-2-114-662.pdf>.
60. M. Cooper, "Centrobolus titanophilus size dimorphism shows width-based variability," *Arthropod.*, vol. 8, no. 2, pp. 80-86, 2019.
61. M. Cooper, "Non-significant intersexual differences in millipede mass," *J. Entomol. Zool. Stud.* vol. 7, no. 3, pp. 763-765, 2019. DOI: 10.22271/j.ento.2019.v7.i3m.5267 <http://www.entomoljournal.com/archives/2019/vol7issue3/PartM/7-3-90-458.pdf>.
62. M. I. Cooper, "Quasi-experimental determination of a mass standard in the forest millipede *Centrobolus inscriptus*," *J. Entomol. Zool. Stud.* vol. 7, no. 3, pp. 772-774, 2019. DOI: 10.22271/j.ento.2019.v7.i3m.5269 <http://www.entomoljournal.com/archives/2019/vol7issue3/PartM/7-3-58-913.pdf>.
63. M. I. Cooper, "Underlying sperm precedence pattern in the millipede *Centrobolus inscriptus* (Attems, 1928) (Diplopoda, Pachybolidae)," *J. Entomol. Zool. Stud.* vol. 7, no. 3, pp. 1066-1069, 2019. DOI: 10.22271/j.ento.2019.v7.i3r.5319 <http://www.entomoljournal.com/archives/2019/vol7issue3/PartR/7-3-106-957.pdf>.
64. M. Cooper, "When is the change in sperm precedence in the millipede *Centrobolus inscriptus*(Attems, 1928) (Diplopoda, Pachybolidae)?" *J. Entomol. Zool. Stud.* vol. 7, no. 4, pp. 183-186, 2019. DOI: 10.22271/j.ento.2019.v7.i4f.5439 <http://www.entomoljournal.com/archives/2019/vol7issue4/PartC/7-3-311-692.pdf>.
65. M. Cooper, "Julid millipede and spirobolid millipede gonopod functional equivalents," *J. Entomol. Zool. Stud.* vol. 7, no. 4, pp. 333-335, 2019. DOI: 10.22271/j.ento.2019.v7.i4f.5465 <http://www.entomoljournal.com/archives/2019/vol7issue4/PartF/7-3-329-431.pdf>.
66. M. Cooper, "Size dimorphism and directional selection in forest millipedes," *Arthropod.*, vol. 8, no. 3, pp. 102-109, 2019. [http://www.iaees.org/publications/journals/arthropods/articles/2019-8\(3\)/size-dimorphism-and-directional-selection-in-forest-millipedes.pdf](http://www.iaees.org/publications/journals/arthropods/articles/2019-8(3)/size-dimorphism-and-directional-selection-in-forest-millipedes.pdf).
67. M. Cooper, "Xylophagous millipede surface area to volume ratios are size dependent in forests," *Arthropod.*, vol. 8, no. 4, pp. 127-136, 2019.
68. M. Cooper, "Size dimorphism in six juliform millipedes," *Arthropod.*, vol. 8, no. 4, pp. 137-142, 2019.
69. M. Cooper, "Year-round correlation between mass and copulation duration in forest millipedes," *Arthropod.*, vol. 9, no. 1, pp. 15-20, 2020.
70. M. Cooper, "Kurtosis and skew show longer males in *Centrobolus*," *Arthropod.*, vol. 9, no. 1, pp. 21-26, 2020.
71. M. Cooper, "Studies of behavioural ecology of *Centrobolus*," LAP LAMBERT Academic Publishing, Mauritius. pp. 1-420, 2020. ISBN: 978-620-2-52046-1.
72. M. Cooper, "Mating dynamics of South African forest millipedes," LAP LAMBERT Academic Publishing, Mauritius. pp. 1-164, 2020. ISBN: 978-620-0-58569-1.
73. M. Cooper, "Behavioural ecology of *Centrobolus*," LAP LAMBERT Academic Publishing, Mauritius. pp. 1-520, 2020. ISBN: 978-620-0-50406-7.
74. M. Cooper, "Zoomorphic variation with copulation duration in *Centrobolus*," *Arthropod.*, vol. 9, no. 2, pp. 63-67, 2020. [http://www.iaees.org/publications/journals/arthropods/articles/2020-9\(2\)/zoomorphic-variation-with-copulation-duration-in-Centrobolus.pdf](http://www.iaees.org/publications/journals/arthropods/articles/2020-9(2)/zoomorphic-variation-with-copulation-duration-in-Centrobolus.pdf).
75. M. Cooper, "Latitudinal-size trend in eight species of *Centrobolus*," *J. Entomol. Zool. Stud.* vol. 8, no. 2, pp. 122-127, 2020. <http://www.entomoljournal.com/archives/2020/vol8issue2/PartC/8-1-381-253.pdf>.
76. M. Cooper, "Longitudinal-size trend in eight species of *Centrobolus*," *Intern. J. Zool. Invest.* vol. 6, no. 1, pp. 58-64, 2020. <https://doi.org/10.33745/ijzi.2020.v06i01.005>.
77. M. Cooper, "Correction: *Centrobolus dubius* (Schubart, 1966) Monomorphism," *Int. J. Res. Stud. Zool.* vol. 6, no. 2, pp. 25-28, 2020. <http://www.arcjournals.org/pdfs/ijrsz/v6-i2/3.pdf>.
78. M. Cooper, "Latitudinal and longitudinal gradients in Old World forest millipedes," LAP LAMBERT Academic Publishing: pp. 77, 2021 ISBN: 978-620-3-02454-8.
79. M. Cooper, "Intrasexual and intersexual size variation in *Centrobolus* Cook, 1897," Scholars' Press, Mauritius. pp. 1-56, 2021. ISBN: 978-613-8-95101-8.
80. M. Cooper, "Size-assortment in *Centrobolus* Cook, 1897," Scholars' Press, Mauritius. pp. 1-52, 2021. ISBN: 978-613-8-95118-6. <http://www.megabooks.sk/p/18255119>.
81. M. Cooper, "Wewnątrzplciowa i międzypłciowa zmienność wielkości u *Centrobolus* Cook, 1897," Scienca Scripts, Mauritius. pp. 1-52, 2021. ISBN: 978-620-3-50733-1. <http://www.megabooks.cz/p/17829353>.

82. M. Cooper, "Variedade de tamanhos no *Centrobolus Cook*, 1897," *Novas Edições Acadêmicas*, Mauritius. pp. 1-52, 2021. ISBN: 978-620-3-46650-8.
83. M. Cooper, "Variação de tamanho intrasexual e intersexual no *Centrobolus Cook*, 1897," *Edições Nosso Conhecimento*, Sciencia Scripts, Mauritius. pp. 1-52, 2021. ISBN: 978-620-3-50735-5.
84. M. Cooper, "Variazione di taglia intrasessuale e intersessuale in *Centrobolus Cook*, 1897," *Sciencia Scripts*, Mauritius. pp. 1-52, 2021. ISBN: 978-620-3-50731-7. <http://www.megabooks.sk/p/18462116>.
85. M. Cooper, "Variation de taille intrasexuelle et intersexuelle chez *Centrobolus Cook*, 1897," *Sciencia Scripts*, Mauritius. pp. 1-52, 2021. ISBN: 978-620-3-50730-0. <http://www.megabooks.sk/p/18462115>.
86. M. Cooper, "Intrasexuelle und intersexuelle größenvariation bei *Centrobolus Cook*, 1897," *Sciencia Scripts*, Mauritius. pp. 1-52, 2021. ISBN: 978-620-3-50729-4. <http://www.megabooks.cz/p/17470313>.
87. M. Cooper, "Size-assortment in *Centrobolus Cook*, 1897 (*Diplopoda: Pachybolidae*)," *Scholars' Press*, Mauritius. pp. 1-52, 2021. ISBN: 978-613-8-95105-6. <http://www.megabooks.sk/p/18254871>.
88. M. Cooper, "Variação da duração da cópula em milípedes semelhantes a vermes," *Novas Edições Acadêmicas*, Mauritius. pp. 1-56, 2021. ISBN: 978-620-3-46666-9.
89. M. Cooper, "Surtido de tamaño en *Centrobolus Cook*, 1897," *Editorial Académica Española*, Mauritius. pp. 1-56, 2021. ISBN: 978-620-3-03960-3.
90. M. Cooper, "Größen-Sortierung bei *Centrobolus Cook*, 1897 (*Diplopoda: Pachybolidae*)," *Südwestdeutscher Verlag für Hochschulschriften*, Sciencia Scripts, Mauritius. pp. 1-52, 2021. ISBN: 978-620-3-54955-3. <http://www.dodax.co.uk/en-gb/books-audiobooks/zoology/cooper-mark-groessensortierung-bei-centrobolus-cook-1897-diplopoda-pachybolidae-dp3Q15G7L5H49>.
91. M. Cooper, "Cambio en la duración de la cópula en ciempiés gusano," *Editorial Académica Española*, Mauritius. pp. 1-56, 2021. ISBN: 978-620-3-03965-8.
92. M. Cooper, "Размерный ассортимент в *Centrobolus Cook*, 1897 г," *Sciencia Scripts*, Mauritius. pp. 1-52, 2021. ISBN: 978-620-3-59606-9. <http://my-shop.ru/shop/product/4534060.html>.
93. M. Cooper, "Variation de durée de copulation dans les mille-pattes vermifuges," *Presses Académiques Francophones*, Mauritius. pp. 1-52, 2021. ISBN: 978-3-8416-3326-2.
94. M. Cooper, "Sortimento de tamanhos em *Centrobolus Cook*, 1897," *Edições Nosso Conhecimento*, Mauritius. pp. 1-52, 2021. ISBN: 978-620-3-59608-3. <http://www.megabooks.sk/p/18456483>.
95. M. Cooper, "Size assortment in *Centrobolus Cook*, 1897," *Our Knowledge Publishing*, Mauritius. pp. 1-52, 2021. ISBN: 978-620-3-59602-1. <http://www.megabooks.sk/p/18456478>.
96. M. Cooper, "Größensortierung bei *Centrobolus Cook*, 1897," *Verlag Unser Wissen*, Mauritius. pp. 1-52, 2021. ISBN: 978-620-3-59601-4. <http://www.megabooks.sk/p/18192206>.
97. M. Cooper, "Groottesortering bij *Centrobolus Cook*, 1897," *Uitgeverij Onze Kennis*, Mauritius. pp. 1-52, 2021. ISBN: 978-620-3-59605-2.
98. M. Cooper, "Assortimento di dimensioni in *Centrobolus Cook*, 1897," *Edizioni Sapienza*, Mauritius. pp. 1-52, 2021. ISBN: 978-620-3-59604-5. <http://www.megabooks.sk/p/18456480>.
99. M. Cooper, "Assortiment de tailles chez *Centrobolus Cook*, 1897," *Editions Notre Savoir*, Mauritius. pp. 1-52, 2021. ISBN: 978-620-3-59603-8. <http://www.megabooks.sk/p/18456479>.
100. M. Cooper, "Asortyment wielkości u *Centrobolus Cook*, 1897 (*Diplopoda: Pachybolidae*)," *Wydawnictwo Nasza Wiedza*, Mauritius. pp. 1-52, 2021. ISBN: 978-620-3-59607-6.
101. M. Cooper, "Zmiana czasu trwania kopulacji w krocionogach przypominających robaki," *Wydawnictwo Nasza Wiedza*, Mauritius. pp. 1-56, 2021. ISBN: 978-620-3-62161-7. <http://www.megabooks.sk/p/18456980>.
102. M. Cooper, "Verandering in copulatieduur bij wormduizendpoten: (*Juliformes*)," *Uitgeverij Onze Kennis*. pp. 1-56, 2021. ISBN: 978-6203621600.
103. M. Cooper, "Veränderung der Kopulationsdauer bei Wurmtausendfüßern," *Verlag Unser Wissen*. pp. 1-52, 2021. ISBN: 978-620-3-62156-3. <http://www.megabooks.sk/p/18258985>.
104. M. Cooper, "Modification de la durée de la copulation chez les millipèdes vermiformes," *Editions Notre Savoir*, Mauritius. pp. 1-56, 2021. ISBN: 978-620-3-62158-7. <http://www.megabooks.sk/p/18456978>.
105. M. Cooper, "Modifica della durata della copulazione nei millepiedi vermi," *Edizioni Sapienza*, Mauritius. pp. 1-56, 2021. ISBN: 978-620-3-62159-4. <http://www.megabooks.sk/p/18456979>.
106. M. Cooper, "Copulation duration variation in worm-like millipedes," *Our Knowledge Publishing*, Mauritius. pp. 1-52, 2021. ISBN: 978-620-3-62157-0. <http://www.megabooks.sk/p/18456977>.
107. M. Cooper, "Alteracao na duracao da copula nas centopeias de minhocas," *Edicoes Nosso Conhecimento*, Mauritius. pp. 1-56, 2021. ISBN: 978-620-3-62162-4. <http://www.megabooks.sk/p/18456981>.
108. M. Cooper, "Zmiana czasu trwania kopulacji w krocionogach przypominających robaki," *Globe Edit*, Latvia. pp. 1-56, 2021. ISBN: 978-620-0-62248-8.
109. M. Cooper, "Variasjon i kokulasjonsvariasjon i ormlignende millipeder," *Globe Edit*, Latvia. pp. 1-52, 2021. ISBN: 978-620-0-62250-1.
110. M. Cooper, "Copulation duration variation in worm-like millipedes," *Scholars' Press*, Mauritius. pp. 1-52, 2021. ISBN: 978-3-639-66208-5.

- 111.M. Cooper, "Variatie in copulatieduur in wormachtige duizendpoten," Globe Edit, Latvia. pp. 1-52, 2021. ISBN: 978-620-0-62258-7.
- 112.M. Cooper, "Variation i kopulationsvarighed i ormelignende tusindben," Globe Edit, Latvia. pp. 1-56, 2021. ISBN: 978-620-0-62257-0.
- 113.M. Cooper, "İçeriği Centrobolus Cook boyut aralığı, 1897 (Diplopoda: Pachybolidae)," LAP LAMBERT Academic Publishing, Mauritius. pp. 1-56, 2021. ISBN: 978-620-3-83963-0.
- 114.M. Cooper, "Kopuleringstidsvariation i maskliknande millipeder," Globe Edit, Latvia. pp. 1-52, 2021. ISBN: 978-620-0-62277-8.
- 115.M. Cooper, "Variation de durée de copulation dans les mille-pattes vermifuges," Blessed Hope Publishing. pp. 1-56, 2021. ISBN: 978-3841633269. <http://www.megabooks.sk/p/18361163>.
- 116.M. Cooper, "ワーム様ミリペデスにおける交尾期間変動," Globe Edit, Latvia. pp. 1-56, 2021. ISBN: 978-620-0-62260-0.
- 117.M. Cooper, "Parittelun keston vaihtelu matomaisten millipedes," Globe Edit, Latvia. pp. 1-52, 2021. ISBN: 978-620-0-62259-4.
- 118.M. Cooper, "Variația duratei copulării în milipelele asemănătoare viermilor," Globe Edit, Latvia. pp. 1-56, 2021. ISBN: 978-620-0-62255-6.
- 119.M. Cooper, "A pázás időtartama a fereg-szerű millipedek változása," Globe Edit, Latvia. pp. 1-52, 2021. ISBN: 978-620-0-62261-7.
- 120.M. Cooper, "蠕蟲狀千足蟲的複製持續時間變化," pp. 1-52, 2021. Goldenlight publishing, Republic of Moldova. ISBN: 978-620-2-41290-2.
- 121.M. Cooper, "웜과 같은 밀리페드의 교화 지속 시간 변화 (줄리포미아)," Globe Edit, Latvia. pp. 1-52, 2021. ISBN: 978-620-0-62533-5.
- 122.M. Cooper, "Mass covaries with volume in forest millipedes Centrobolus Cook, 1897," J. Entomol. Zool. Stud. vol. 9, no. 6, pp. 190-192, 2021. <http://www.entomoljournal.com/archives/2021/vol9issue6/PartC/9-6-36-202.pdf>.
- 123.COOPER, MARK IAN. THE SURFACE AREA IS RELATED TO MATING FREQUENCIES ACROSS SYMPATRIC *CENTROBOLUS ANULATUS* (ATTEMS, 1934) AND *C. INSCRIPTUS* (ATTEMS, 1928). Universe Int. J. Interdiscip. Res. 2022; 3(7): 11-20. DOI NO.: 08.2020-25662434 DOI Link: <https://uijir.com/the-surface-area-is-related-to-mating-frequencies-across-sympatric-centrobolus-anulatus-attems-1934-and-c-inscriptus-attems-1928-2/>. [https://www.doi-
ds.org/doi/10.2022-39677929/UIJIR](https://www.doi-
ds.org/doi/10.2022-39677929/UIJIR).
- 124.Cooper, Mark I. VOLUME IS RELATED TO SURFACE-AREA-TO-VOLUME ACROSS *CENTROBOLUS* COOK, 1897. Universe Int. J. Interdiscip. Res. 2022; 3(6): 83-91. <https://uijir.com/wp-content/uploads/2022/12/11-221113-UIJIR.pdf>.
- 125.Cooper, Mark. SEX RATIO VARIES WITH AVERAGE SUN HOURS IN RED MILLIPEDES *CENTROBOLUS* COOK, 1897. Int. j. eng. sci. invention res. dev. 2022; 9(6): 204-207. <https://www.ijesird.com/wp-content/uploads/2024/05/DEC5.pdf>.
- 126.Cooper, Mark. SEX RATIO VARIES WITH RAINY DAYS IN RED MILLIPEDES *CENTROBOLUS* COOK, 1897. Int. j. eng. sci. invention res. dev. 2022; 9(6): 199-203. <https://www.ijesird.com/wp-content/uploads/2024/05/DEC4.pdf>.
- 127.Cooper, Mark. SEX RATIO VARIES WITH HUMIDITY IN RED MILLIPEDES *CENTROBOLUS* COOK, 1897. Int. j. eng. sci. invention res. dev. 2022; 9(6): 194-198. <https://www.ijesird.com/wp-content/uploads/2024/05/DEC3.pdf>.
- 128.Cooper, Mark. SEX RATIO VARIES WITH PRECIPITATION IN RED MILLIPEDES *CENTROBOLUS* COOK, 1897. Int. j. eng. sci. invention res. dev. 2022; 9(6): 189-193. <https://www.ijesird.com/wp-content/uploads/2024/05/DEC4new.pdf>.
- 129.Cooper, Mark. SEX RATIO VARIES WITH MAXIMUM TEMPERATURE IN RED MILLIPEDES *CENTROBOLUS* COOK, 1897. Int. j. eng. sci. invention res. dev. 2022; 9(6): 184-188. <https://www.ijesird.com/wp-content/uploads/2024/05/DEC3new.pdf>.
- 130.Cooper, Mark. SEX RATIO VARIES WITH MINIMUM TEMPERATURE IN RED MILLIPEDES *CENTROBOLUS* COOK, 1897. Int. j. eng. sci. invention res. dev. 2022; 9(6): 179-183. <https://www.ijesird.com/wp-content/uploads/2024/05/DEC2-1.pdf>.
- 131.Cooper, Mark. SEX RATIO VARIES WITH AVERAGE TEMPERATURE IN RED MILLIPEDES *CENTROBOLUS* COOK, 1897. Int. j. eng. sci. invention res. dev. 2022; 9(6): 174-178. <https://www.ijesird.com/wp-content/uploads/2024/05/DEC1.pdf>.
- 132.Cooper, Mark I. SURFACE-AREA-TO-VOLUME IS RELATED TO SEXUAL SIZE DIMORPHISM ACROSS *CENTROBOLUS* COOK, 1897. Universe Int.

- J. Interdiscip. Res. 2022; 3(6): 34-42.
<https://uijir.com/surface-area-to-volume-is-related-to-sexual-size-dimorphism-across-centrobolus-cook-1897/>. DOI NO.: 08.2020-25662434 DOI Link:
<https://www.doi-ds.org/doi/10.2022-24116995/UIJIR>.
133. Cooper, Mark. TARSAL PAD LENGTHS ARE RELATED TO SURFACE-AREA-TO-VOLUME RATIOS IN *CENTROBOLUS* COOK, 1897. Universe Int. J. Interdiscip. Res. 2022; 3(6): 27-33. <https://www.doi-ds.org/doi/10.2022-98742794/UIJIR>.
<https://uijir.com/wp-content/uploads/2022/11/4-22101-UIJIR.pdf>.
134. COOPER, MARK I. MOMENTS OF INERTIA COVARY WITH SURFACE AREA IN FOREST RED MILLIPEDES *CENTROBOLUS* COOK, 1897. Int. j. eng. sci. invention res. dev. 2022; 9(5): 168-173.
https://www.ijesird.com/wp-content/uploads/2024/05/nov_6.pdf
135. COOPER, MARK I. ARE SURFACE AREA AND SURFACE-AREA-TO-VOLUME RATIO RELATED TO LATITUDE AND LONGITUDE IN *CENTROBOLUS* COOK, 1897? Int. j. eng. sci. invention res. dev. 2022; 9(5): 162-167.
https://www.ijesird.com/wp-content/uploads/2024/05/nov_5.pdf
136. COOPER, MARK I. MATING FREQUENCY IS RELATED TO SURFACE AREA AND SURFACE-AREA-TO-VOLUME RATIOS IN *CENTROBOLUS* COOK, 1897. Int. j. eng. sci. invention res. dev. 2022; 9(5): 155-161.
https://www.ijesird.com/wp-content/uploads/2024/05/nov_4.pdf
137. Cooper, Mark I. DOES EJACULATE VOLUME VARY WITH SURFACE AREA AND SURFACE AREA TO VOLUME RATIO IN *CENTROBOLUS* COOK, 1897? Int. j. eng. sci. invention res. dev. 2022; 9(5): 152-154.
https://www.ijesird.com/wp-content/uploads/2024/05/nov_3.pdf
138. COOPER, MARK I. ARE SURFACE AREA AND SURFACE-AREA-TO-VOLUME RATIO RELATED TO COPULATION DURATION IN *CENTROBOLUS* COOK, 1897? Int. j. eng. sci. invention res. dev. 2022; 9(4): 146-151.
https://www.ijesird.com/wp-content/uploads/2024/05/nov_2.pdf
139. COOPER, MARK I. ARE SURFACE AREA AND SURFACE-AREA-TO-VOLUME RATIO RELATED TO SEX RATIOS IN *CENTROBOLUS* COOK, 1897? Int. j. eng. sci. invention res. dev. 2022; 9(5): 140-145.
https://www.ijesird.com/wp-content/uploads/2024/05/nov_1.pdf
140. Cooper, Mark I. ABUNDANCE IS RELATED TO SURFACE AREA AND SURFACE-AREA-TO-VOLUME RATIOS IN *CENTROBOLUS* COOK, 1897. Universe Int. J. Interdiscip. Res. 2022; 3(5): 231-240.
<https://www.doi-ds.org/doi/10.2022-99614928/UIJIR>.
141. Cooper, M. A Latitudinal Gradient in Species Richness of Subgenus *Tetraconasoma* Verhoeff, 1924, not *Sphaerotherium* Brandt, 1833 (Diplopoda: Sphaerotheriida)? Int. j. zool. animal biol. 2022; 5(6): 000413. DOI: 10.23880/izab-16000413.
<https://medwinpublishers.com/IZAB/a-latitudinal-gradient-in-species-richness-of-subgenus-tetraconasoma-verhoeff-1924-not-sphaerotherium-brandt-1833-diplopoda-sphaerotheriida.pdf>.
142. COOPER, MARK I. MASS COVARIES WITH SURFACE AREA IN FOREST RED MILLIPEDES *CENTROBOLUS* COOK, 1897. Int. j. eng. sci. invention res. dev. 2022; 9(4): 133-138. <https://www.ijesird.com/wp-content/uploads/2023/10/october2.pdf>.
143. Cooper, Mark Ian. IS MASS CORRELATED WITH LENGTH AMONG RED MILLIPEDES *CENTROBOLUS* COOK, 1897? Universe Int. J. Interdiscip. Res. 2022; 3(5): 98-103. <https://www.doi-ds.org/doi/10.2022-42796679/UIJIR>.
<https://uijir.com/wp-content/uploads/2022/11/11-221012-UIJIR.pdf>.
144. COOPER, MARK. PREDICTED SPECIES RICHNESS VARIATION WITH TIME IN RED MILLIPEDES *CENTROBOLUS* COOK, 1897. Universe Int. J. Interdiscip. Res. 2022; 3(5): 80-88. <https://www.doi-ds.org/doi/10.2022-57466768/UIJIR>.
<http://uijir.com/wp-content/uploads/2022/11/9-221023-UIJIR.pdf>.
145. Cooper, Mark I. PREDICTED MATING FREQUENCIES FOR CALCULATED AND CONTROLLED MASSES AT DISTANT LATITUDES AND LONGITUDES IN RED MILLIPEDES *CENTROBOLUS* COOK, 1897. Universe Int. J. Interdiscip. Res. 2022; 3(5): 9-17. <https://www.doi-ds.org/doi/10.2022-62878444/UIJIR>.
<https://uijir.com/wp-content/uploads/2022/10/2-221008-UIJIR.pdf>.
146. Cooper, Mark I. NO LONGITUDINAL SPECIES DIVERSITY GRADIENT IN RED MILLIPEDES *CENTROBOLUS* COOK, 1897. Universe Int. J. Interdiscip. Res. 2022; 3(5): 1-8. <https://www.doi-ds.org/doi/10.2022-16757148/UIJIR>.
<https://uijir.com/wp-content/uploads/2022/10/1-221007-UIJIR-.pdf>.
147. COOPER, MARK IAN. SURFACE AREA IS RELATED TO SPECIES RICHNESS ACROSS *CENTROBOLUS* COOK, 1897. Int. j. eng. sci. invention res. dev. 2022; 9(4): 126-132. https://www.ijesird.com/wp-content/uploads/2023/10/oct_1.pdf.
148. Cooper, M. Converse of Rensch's rule is Probably true in Millipedes. International Journal of Zoology and Animal Biology. 2022; 5(5): 000410. DOI: 10.23880/izab-16000410. <https://medwinpublishers.com/IZAB/converse-of-renschs-rule-is-not-necessarily-true-in-millipedes.pdf>.
149. COOPER, MARK I. Mass variation with time in red millipedes *Centrobolus* Cook, 1897. Int. j. eng. sci. invention res. dev. 2022; 9(3): 119-125.
https://www.ijesird.com/wp-content/uploads/2023/10/sep_five.pdf.
150. COOPER, MARK I. PREDICTED ABUNDANCES FOR CALCULATED AND CONTROLLED SEXUAL SIZE

- DIMORPHISM AT DISTANT LATITUDES AND LONGITUDES IN RED MILLIPEDES *CENTROBOLUS* COOK, 1897. Int. j. eng. sci. invention res. dev. 2022; 9(3): 113-118. https://www.ijesird.com/wp-content/uploads/2023/10/sep_four.pdf.
151. COOPER, MARK. MOMENTS OF INERTIA LINK TO MALE SIZE IN RED MILLIPEDES *CENTROBOLUS* COOK, 1897. Int. j. eng. sci. invention res. dev. 2022; 9(3): 107-112. https://www.ijesird.com/wp-content/uploads/2023/10/sept_three_two.pdf.
152. Cooper, Mark. MOMENTS OF INERTIA ARE RELATED TO SPECIES RICHNESS IN RED MILLIPEDES *CENTROBOLUS* COOK, 1897. Universe Int. J. Interdiscip. Res. 2022; 4(3): 193-200. <http://www.doi-ds.org/doi/10.2022-84613577/UIJIR>. <http://uijir.com/wp-content/uploads/2022/10/27-UIJIR-938.pdf>.
153. Cooper, Mark. CORRELATION COEFFICIENT MATRIX FOR SIXTEEN FACTORS IN THE MATING SYSTEMS OF RED MILLIPEDES *CENTROBOLUS* COOK, 1897. Universe Int. J. Interdiscip. Res. 2022; 3(4): 148-155. <http://www.doi-ds.org/doi/10.2022-52233387/UIJIR>. <https://uijir.com/wp-content/uploads/2022/10/20-UIJIR-930.pdf>.
154. Cooper, Mark I. DOES SEXUAL SIZE DIMORPHISM VARY WITH FEWEST DAILY HOURS OF SUNSHINE IN RED MILLIPEDES *CENTROBOLUS* COOK, 1897? Universe Int. J. Interdiscip. Res. 2022; 3(4): 33-36. <http://www.doi-ds.org/doi/10.2022-72997389/UIJIR>. <https://uijir.com/wp-content/uploads/2022/09/5-UIJIR-905.pdf>.
155. Cooper, Mark. DOES (PREDICTED) MASS CORRELATE WITH MATING FREQUENCIES IN *CENTROBOLUS* COOK, 1897? Universe Int. J. Interdiscip. Res. 2022; 3(4): 14-19. <http://www.doi-ds.org/doi/10.2022-18461239/UIJIR>.
156. Cooper, Mark I. DOES SEXUAL SIZE DIMORPHISM VARY WITH FEWEST DAILY HOURS OF SUNSHINE IN RED MILLIPEDES *CENTROBOLUS* COOK, 1897? Universe Int. J. Interdiscip. Res. 2022; 3(3): 89-92. <http://www.doi-ds.org/doi/10.2022-94655978/UIJIR>.
157. COOPER, MARK IAN. IS A PROMINENT STERNITE RELATED TO SEX RATIOS AND ABUNDANCE IN *CENTROBOLUS* COOK, 1897? Int. j. eng. sci. invention res. dev. 2022; 9(3): 103-106. https://www.ijesird.com/wp-content/uploads/2023/10/sep_two_6.pdf.
158. COOPER, MARK. IS SIZE OR SSD RELATED TO ABUNDANCE IN *CENTROBOLUS* COOK, 1897? Int. j. eng. sci. invention res. dev. 2022; 9(3): 96-102. https://www.ijesird.com/wp-content/uploads/2023/10/sep_one.pdf.
159. Cooper, Mark. 2022. DOES SEXUAL SIZE DIMORPHISM VARY WITH BODY MASS IN FOREST MILLIPEDES *CENTROBOLUS* COOK, 1897? Munis Entomol. Zool. Suppl. 17(supplement): 1621-1624. http://www.munisentzool.org/Issue/abstract/does-sexual-size-dimorphism-vary-with-body-mass-in-forest-millipedes-centrobolus-cook-1897_13861.
160. Cooper, Mark. 2022. DOES SEXUAL SIZE DIMORPHISM VARY WITH THE HIGHEST TOTAL HOURS OF SUNSHINE IN A MONTH IN FOREST MILLIPEDES *CENTROBOLUS* COOK, 1897? Munis Entomol. Zool. 17(supplement): 1596-1602. http://www.munisentzool.org/Issue/abstract/does-sexual-size-dimorphism-vary-with-the-highest-total-hours-of-sunshine-in-a-month-in-forest-millipedes-centrobolus-cook-1897_13858.
161. Cooper, Mark. 2022. DOES SEXUAL SIZE DIMORPHISM VARY WITH FEMALE WIDTH IN FOREST MILLIPEDES *CENTROBOLUS* COOK, 1897? Munis Entomol. Zool. 17(supplement): 1562-1565. http://www.munisentzool.org/Issue/abstract/does-sexual-size-dimorphism-vary-with-female-width-in-forest-millipedes-centrobolus-cook-1897_13854.
162. COOPER, Mark I. ARE MATING FREQUENCIES RELATED TO EJACULATE VOLUMES IN *CENTROBOLUS* COOK, 1897? Int. j. eng. sci. invention res. dev. 2022; 9(2): 93-95. https://www.ijesird.com/wp-content/uploads/2023/10/aug_ten.pdf.
163. Cooper, M. SIZE ACROSS WEATHER GRADIENTS IN PILL MILLIPEDES (DIPLOPODA): III. FEMALE VOLUME AND LOWEST NUMBER OF DAILY HOURS OF SUNSHINE (TOTAL), WARMEST MONTH OF THE YEAR, COOLEST MONTH IN THE YEAR, AVERAGE ANNUAL TEMPERATURE, AND MONTH WITH THE HIGHEST NUMBER OF RAINY DAYS. Int. j. eng. sci. invention res. dev. 2022; 9(2): 88-92. https://www.ijesird.com/wp-content/uploads/2023/10/aug_nine.pdf.
164. Cooper, M. I. SIZE ACROSS WEATHER GRADIENTS IN PILL MILLIPEDES (DIPLOPODA): I. FEMALE VOLUME AND PRECIPITATION. Int. j. eng. sci. invention res. dev. 2022; 9(2): 84-87. https://www.ijesird.com/wp-content/uploads/2023/10/aug_eight.pdf.
165. Cooper, M. I. SIZE ACROSS WEATHER GRADIENTS IN PILL MILLIPEDES (DIPLOPODA): II. FEMALE VOLUME AND LOWEST NUMBER OF DAILY HOURS OF SUNSHINE (AVERAGE). Int. j. eng. sci. invention res. dev. 2022; 9(2): 80-83. https://www.ijesird.com/wp-content/uploads/2023/10/aug_seven.pdf.
166. Cooper, M. Ian. THE MOMENTS OF INERTIA TIE-UP WITH FEMALE SIZE, HOURS OF SUNSHINE THROUGHOUT THE YEAR, LATITUDE, LONGITUDE, AND MINIMUM TEMPERATURE IN RED MILLIPEDES *CENTROBOLUS* COOK, 1897. Universe Int. J. Interdiscip. Res. 2022; 3(2): 6-12. <http://www.doi-ds.org/doi/10.2022-76913842/UIJIR>.
167. Cooper, Mark. DOES EJACULATE VOLUME VARY WITH ABSOLUTE ABUNDANCE IN RED MILLIPEDES *CENTROBOLUS* COOK, 1897? Int. j. eng.

- sci. invention res. dev. 2022; 9(2): 77-79. https://www.ijesird.com/wp-content/uploads/2023/10/6_aug_22.pdf.
168. Cooper, M. Ian. ARE MATING FREQUENCIES RELATED TO MALE AND FEMALE SIZE IN CENTROBOLUS COOK, 1897? Int. j. eng. sci. invention res. dev. 2022; 9(2): 71-76. https://www.ijesird.com/wp-content/uploads/2023/10/5_aug_22.pdf.
169. Cooper, Mark. ARE ABSOLUTE ABUNDANCES RELATED TO TARSAL PAD LENGTH IN CENTROBOLUS COOK, 1897? Int. j. eng. sci. invention res. dev. 2022; 9(2): 68-70. https://www.ijesird.com/wp-content/uploads/2023/10/4_aug_22.pdf.
170. Cooper, Mark. IS COPULATION DURATION RELATED TO TARSAL PAD LENGTH IN CENTROBOLUS COOK, 1897? Int. j. eng. sci. invention res. dev. 2022; 9(2): 65-67. https://www.ijesird.com/wp-content/uploads/2023/10/3_aug_22.pdf.
171. Cooper, M. Ian. ARE MATING FREQUENCIES RELATED TO TARSAL PAD LENGTH IN CENTROBOLUS COOK, 1897? Int. j. eng. sci. invention res. dev. 2022; 9(2): 1-4. https://www.ijesird.com/wp-content/uploads/2023/10/1_aug_22.pdf.
172. Cooper, Mark. ARE MATING FREQUENCIES RELATED TO MOMENTS OF INERTIA ACROSS THE SEXES IN CENTROBOLUS COOK, 1897? Int. j. eng. sci. invention res. dev. 2022; 9(1): 52-55. https://www.ijesird.com/wp-content/uploads/2023/10/13_jul_22.pdf.
173. Cooper, M. Ian. ARE MATING FREQUENCIES RELATED TO SEXUAL SIZE DIMORPHISM IN CENTROBOLUS COOK, 1897? Int. j. eng. sci. invention res. dev. 2022; 9(1): 49-51. https://www.ijesird.com/wp-content/uploads/2023/10/12_jul_22.pdf.
174. Cooper, M. Ian. ARE MATING FREQUENCIES RELATED TO SEX RATIO IN CENTROBOLUS COOK, 1897? Int. j. eng. sci. invention res. dev. 2022; 9(1): 45-48. https://www.ijesird.com/wp-content/uploads/2023/10/11_jul_22.pdf.
175. Cooper, M. Ian. IS A PROMINENT STERNITE RELATED TO WEATHER IN CENTROBOLUS COOK, 1897? Int. j. eng. sci. invention res. dev. 2022; 9(1): 41-44. https://www.ijesird.com/wp-content/uploads/2023/10/10_jul_22.pdf.
176. Cooper, M. Ian. DOES COPULATION DURATION VARY WITH SEX RATIO IN THE RED MILLIPEDE CENTROBOLUS INSCRIPTUS (ATTEMS, 1928)? Int. j. eng. sci. invention res. dev. 2022; 9(1): 38-40. https://www.ijesird.com/wp-content/uploads/2023/10/9_jul_22.pdf.
177. Cooper, M. Ian. ARE MATING FREQUENCIES RELATED TO ABSOLUTE ABUNDANCE IN CENTROBOLUS COOK, 1897? Int. j. eng. sci. invention res. dev. 2022; 9(1): 33-37. https://www.ijesird.com/wp-content/uploads/2023/10/8_jul-22.pdf.
178. Cooper, Mark I. Is mass related to latitude, longitude, and weather in *Centrobolus Cook*, 1897? Int. j. eng. sci. invention res. dev. 2022; 9(1): 27-32. https://www.ijesird.com/wp-content/uploads/2023/10/7_jul_22.pdf.
179. Cooper, M. I. Are coleopod spine length and number related to mass in *Centrobolus Cook*, 1897? Int. j. eng. sci. invention res. dev. 2022; 9(1): 24-26. https://www.ijesird.com/wp-content/uploads/2023/10/6_jul_22.pdf.
180. Cooper, M. I. Are coleopod spine length and number related to weather in *Centrobolus Cook*, 1897? Int. j. eng. sci. invention res. dev. 2022; 9(1): 16-23. https://www.ijesird.com/wp-content/uploads/2023/10/5_jul_22.pdf.
181. Cooper, M. Ian. Are a prominent sternite, coleopod spine length, and spine number related to mating frequencies in *Centrobolus Cook*, 1897? Int. j. eng. sci. invention res. dev. 2022; 9(1): 12-15. https://www.ijesird.com/wp-content/uploads/2023/10/4_jul_22.pdf.
182. Cooper, M. Ian. Does copulation duration vary with absolute abundance in red millipedes *Centrobolus Cook*, 1897? Int. j. eng. sci. invention res. dev. 2022; 9(1): 9-11. https://www.ijesird.com/wp-content/uploads/2023/10/3_jul_22.pdf.
183. Cooper, Mark Ian. Does sex ratio vary with absolute abundance in red millipedes *Centrobolus Cook*, 1897? Int. j. eng. sci. invention res. dev. 2022; 9(1): 5-8. https://www.ijesird.com/wp-content/uploads/2023/10/2_jul_22.pdf.
184. Cooper, M. Ian. Is a prominent sternite related to mass in *Centrobolus Cook*, 1897? Int. j. eng. sci. invention res. dev. 2022; 9(1): 1-4. https://www.ijesird.com/wp-content/uploads/2023/10/1_jul_22.pdf.
185. Cooper, Mark Ian. Sexual dimorphism across latitude in pill millipedes (Diplopoda). Zool. Entomol. Letrs. 2022; 2(2): 17-20. <http://www.zoologicaljournal.com/archives/2022.v2.i2.A.42>.
186. Cooper, M. Ian. 2022. COPULATION DURATION IS RELATED TO EJACULATING VOLUME IN CENTROBOLUS INSCRIPTUS (ATTEMS, 1928). Int. j. eng. sci. invention res. dev. 2022; 8(12): 32-40. https://www.ijesird.com/wp-content/uploads/2023/10/3_june_22.pdf.
187. Cooper, M. Ian. IS COPULATION DURATION RELATED TO MOMENTS OF INERTIA IN CENTROBOLUS COOK, 1897? Int. j. eng. sci. invention res. dev. 2022; 8(12): 29-31. https://www.ijesird.com/wp-content/uploads/2023/10/2_june_22.pdf.
188. Cooper, M. Ian. IS A PROMINENT STERNITE RELATED TO MOMENTS OF INERTIA IN CENTROBOLUS COOK, 1897? Int. j. eng. sci. invention res. dev. 2022; 8(12): 26-28. https://www.ijesird.com/wp-content/uploads/2023/10/1_june_22.pdf.

189. Cooper, M. THE TIE-IN OF MALE BODY WIDTH ON COPULATION DURATION IN *CENTROBOLUS COOK*, 1897. Universe Int. J. Interdiscip. Res. 2022; 3(1): 45-47. <http://www.doi-ds.org/doi/10.2022-88932399/UIJIR>.
190. Cooper, M. I. FEMALE VOLUME, LOWEST HOURS OF SUNSHINE, MONTH WITH THE HIGHEST NUMBER OF RAINY DAYS, RAINFALL, AND TEMPERATURES IN THE COOLEST AND WARMEST MONTHS OF THE YEAR ARE RELATED TO LATITUDE (AND LONGITUDE) ACROSS THE DISTRIBUTION OF PILL MILLIPEDES *SPHAEROTHERIUM BRANDT*, 1833. Universe Int. J. Interdiscip. Res. 2022; 3(1): 11-22. <http://www.doi-ds.org/doi/10.2022-51527898/UIJIR>.
191. Cooper, M. I. THE MONTH WITH THE HIGHEST NUMBER OF RAINY DAYS, AVERAGE AND WARMEST TEMPERATURES, DAILY HOURS OF SUNSHINE, AND RAINFALL ACROSS THE DISTRIBUTION OF PILL MILLIPEDES *SPHAEROTHERIUM BRANDT*, 1833. Universe Int. J. Interdiscip. Res. 2022; 3(1): 1-10. <http://www.doi-ds.org/doi/10.2022-62322612/UIJIR>.
192. Cooper, Mark Ian. Is mass correlated with width among red millipedes *Centrobolus Cook*, 1897? Zool. Entomol. Lett. 2022; 2(1): 81-85. <http://www.zoologicaljournal.com/archives/2022.v2.i1.B.3.8>.
193. Cooper, Mark Ian. Do copulation duration and sexual size dimorphism vary with relative abundance in red millipedes *Centrobolus Cook*, 1897? Acta Entomol. Zool. 2022; 3(1): 06-09. <http://www.actajournal.com/archives/2022.v3.i2.A.69>. <https://doi.org/10.33545/27080013.2022.v3.i2a.69>.
194. Cooper, Mark Ian. Is a prominent sternite related to spine length, spine number, copulation duration, and male width in *Centrobolus Cook*, 1897? Acta Entomol. Zool. 2022; 3(2): 01-05. <http://www.actajournal.com/archives/2022.v3.i2.A.68>. <https://doi.org/10.33545/27080013.2022.v3.i2a.68>.
195. Cooper, M. THE MOMENTS OF INERTIA TIE-UP WITH PRECIPITATION, NUMBER OF RAINY DAYS, LOWEST RELATIVE HUMIDITY, AND AVERAGE TEMPERATURE IN RED MILLIPEDES *CENTROBOLUS COOK*, 1897. Int. J. Re. Res. Thesis Diss. 2022; 3(1): 130-145. <https://doi.org/10.5281/zenodo.6659980>.
196. Cooper, M. THE MOMENTS OF INERTIA TIE-UP WITH SEXUAL SIZE DIMORPHISM IN RED MILLIPEDES *CENTROBOLUS COOK*, 1897. Int. J. Re. Res. Thesis Diss. 2022; 3(1): 127-129. <https://doi.org/10.5281/zenodo.6656536>.
197. Cooper, Mark Ian. DOES SEXUAL SIZE DIMORPHISM VARY WITH LOG SEXUAL SIZE DIMORPHISM IN RED MILLIPEDES *CENTROBOLUS COOK*, 1897? Universe Int. J. Interdiscip. Res. 2022; 2(12): 52-54. <http://www.doi-ds.org/doi/10.2022-83544225/UIJIR>.
198. Cooper, Mark I. The inverse latitudinal gradients in species richness of Southern African millipedes. Int. J. Re. Res. Thesis Diss. 2022; 3(1): 91-112. <https://doi.org/10.5281/zenodo.6613064>.
199. Cooper, Mark I. Do copulation durations of sympatric red millipedes vary seasonally with mating frequencies? Int. J. Re. Res. Thesis Diss. 2022; 3(1): 85-90. <https://doi.org/10.5281/zenodo.6613001>.
200. Cooper, Mark. DOES SEXUAL SIZE DIMORPHISM VARY WITH PRECIPITATION IN FOREST MILLIPEDES *CENTROBOLUS COOK*, 1897? Munis Entomology and Zoology. 17(2): 1185-1189. http://www.munisentzool.org/Issue/abstract/does-sexual-size-dimorphism-vary-with-precipitation-in-forest-millipedes-centrobolus-cook-1897_13813.
201. Cooper, Mark. DOES SEXUAL SIZE DIMORPHISM VARY WITH FEMALE LENGTH IN FOREST MILLIPEDES *CENTROBOLUS COOK*, 1897? Universe Int. J. Interdiscip. Res. 2(12): 1-7. <http://www.doi-ds.org/doi/10.2022-69939779/UIJIR>.
202. Cooper, Mark Ian. Do copulation duration and sexual size dimorphism vary with absolute abundance in red millipedes *Centrobolus Cook*, 1897? Acta Entomol. Zool. 2022; 3(1): 51-54. <http://www.actajournal.com/archives/2022.v3.i1.A.64>. <https://doi.org/10.33545/27080013.2022.v3.i1a.64>.
203. Cooper, Mark. Millipede mass: Intersexual differences. Zool. Entomol. Lett. 2022; 2(1): 69-70. <http://www.zoologicaljournal.com/archives/2022.v2.i1.B.3.6>.
204. Cooper, Mark. Does sexual size dimorphism vary with sex ratio in red millipedes *Centrobolus Cook*, 1897? Zool. Entomol. Lett. 2022; 2(1): 66-68. <http://www.zoologicaljournal.com/archives/2022.v2.i1.B.3.5>.
205. Cooper, Mark. Does sexual size dimorphism vary with maximum and minimum temperatures in red millipedes *Centrobolus Cook*, 1897? Zool. Entomol. Lett. 2022; 2(1): 60-65. <http://www.zoologicaljournal.com/archives/2022.v2.i1.B.3.4>.
206. Cooper, Mark. Mating frequencies of sympatric red millipedes differ across substrate due to absolute abundances. Acta Entomol. Zool. 2022; 3(1): 34-39. I: <https://doi.org/10.33545/27080013.2022.v3.i1a.62>.
207. Cooper, Mark. Does sexual size dimorphism vary with time in red millipedes *Centrobolus Cook*, 1897? Zool. Entomol. Lett. 2(1): 30-35. <http://www.zoologicaljournal.com/archives/2022.v2.i1.A.29>.
208. Cooper, Mark Ian. Five factors effecting copulation duration in the breeding season in forest millipedes *Centrobolus Cook*, 1897. Zool. Entomol. Lett. 2(1): 17-22.

- <http://www.zoologicaljournal.com/archives/2022.v2.i1.A.26>.
209. Cooper, Mark. DOES SEXUAL SIZE DIMORPHISM VARY WITH SPECIES RICHNESS IN FOREST MILLIPEDES *CENTROBOLUS* COOK, 1897? Universe Int. J. Interdiscip. Res. 2(10): 25-29. <http://www.doi-ds.org/doi/10.33545/27080013.2022.v3.i1a.58>.
210. Cooper, Mark. PAIR-WISE COMPARISON OF SEXUAL SHAPE DIMORPHISM AMONG FIFTEEN FACTORS IN FOREST MILLIPEDES *CENTROBOLUS* COOK, 1897. Universe Int. J. Interdiscip. Res. 2(10): 9-14. <http://www.doi-ds.org/doi/10.33545/27080013.2022.v3.i1a.57>.
211. Cooper, Mark. Does sexual size dimorphism vary with hours of sunshine throughout the year in forest millipedes *Centrobolus* Cook, 1897? Acta Entomol. Zool. 3(1): 19-25. DOI: <https://doi.org/10.33545/27080013.2022.v3.i1a.58>.
212. Cooper, Mark. Does sexual size dimorphism vary with female size in forest millipedes *Centrobolus* Cook, 1897? Acta Entomol. Zool. 3(1): 15-18. <https://doi.org/10.33545/27080013.2022.v3.i1a.57>.
213. Cooper, Mark. PAIR-WISE COMPARISON OF SEXUAL SIZE DIMORPHISM AMONG NINE FACTORS IN FOREST MILLIPEDES *CENTROBOLUS* COOK, 1897. Universe Int. J. Interdiscip. Res. 2(9): 31-33. <http://www.doi-ds.org/doi/10.33545/27080013.2022.v3.i1a.51>.
214. Cooper, Mark. DOES SEXUAL SIZE DIMORPHISM VARY WITH MONTH WITH THE HIGHEST NUMBER OF RAINY DAYS IN FOREST MILLIPEDES *CENTROBOLUS* COOK, 1897. Universe Int. J. Interdiscip. Res. 2(9): 9-14. <http://www.doi-ds.org/doi/10.33545/27080013.2022.v3.i1a.51>.
215. Cooper, Mark. Does sexual size dimorphism vary with temperature in forest millipedes *Centrobolus* Cook, 1897? Acta Entomol. Zool. 2022;3(1):08-11. <https://doi.org/10.33545/27080013.2022.v3.i1a.51>.
216. Cooper, Mark. Does sexual size dimorphism vary with latitude in forest millipedes *Centrobolus* Cook, 1897? Int. J. Re. Res. Thesis Diss. 2022; 3(1): 6-11. <http://www.paperpublications.org/issue/IJRRTD/Issue-1-January-2022-June-2022>.
217. Cooper, Mark. Does sexual size dimorphism vary with longitude in forest millipedes *Centrobolus* Cook, 1897? International Journal of Recent Research in Thesis and Dissertation. 2022; 3(1): 1-5. <http://www.paperpublications.org/issue/IJRRTD/Issue-1-January-2022-June-2022>.
218. Cooper, Mark. The copulation duration allometry in *Centrobolus* (Diplopoda: Spirobolida: Pachybolidae). J. Entomol. Zool. Stud. 2022;10(1):63-68. <https://doi.org/10.22271/j.ento.2022.v10.i1a.8925>.
219. Cooper, Mark. The inverse latitudinal gradient in species richness of forest millipedes: Pachybolidae Cook, 1897. J. Entomol. Zool. Stud. 2022;10(1):05-08. <http://www.entomoljournal.com/archives/2022/vol10issue1/PartA/9-6-49-906.pdf>.
220. Cooper, Mark. The inverse latitudinal gradient in species richness of forest millipedes: Pentazonia Brandt, 1833. J. Entomol. Zool. Stud. 2022;10(1):01-04. <http://www.entomoljournal.com/archives/2022/vol10issue1/PartA/9-6-47-884.pdf>.
221. Cooper, Mark. (2022). Total Body Rings Increase with Latitude and Decrease with Precipitation in Forest Millipedes *Centrobolus* Cook, 1897. *New Visions in Biological Science* Vol. 9, 96-101. <http://doi.org/10.9734/bpi/nvbs/v9/1900A>.
222. Cooper, Mark. (2022). The Latitudinal Gradient in Dalodesmidae Cook, 1896a Species Richness. *New Visions in Biological Science* Vol. 9, 89-95. <http://doi.org/10.9734/bpi/nvbs/v9/1899A>.
223. Cooper, Mark. (2022). The Inverse Latitudinal Gradient in Species Richness of Forest Millipedes: *Centrobolus* Cook, 1897. *New Visions in Biological Science* Vol. 9, 82-88. <http://doi.org/10.9734/bpi/nvbs/v9/1898A>.
224. Cooper, Mark. (2022). Bergmann's Rule: Size Correlates with Longitude and Temperature in Forest Millipedes *Centrobolus* Cook, 1897. *New Visions in Biological Science* Vol. 9, 68-81. <http://doi.org/10.9734/bpi/nvbs/v9/1897A>.
225. Cooper, Mark. (2022). Why Sexual Size Dimorphism Increases with Longitude, Precipitation and Temperature and Decreases with Latitude in Forest Millipedes *Centrobolus* Cook, 1897. *New Visions in Biological Science* Vol. 9, 58-67. <http://doi.org/10.9734/bpi/nvbs/v9/1896A>.
226. Cooper, Mark. (2022). The Relationships between Sexual Size Dimorphism and Precipitation and Female Size and Temperature in *Sphaerotherium* Brandt, 1833. *New Visions in Biological Science* Vol. 9, 52-57. <http://doi.org/10.9734/bpi/nvbs/v9/1895A>.
227. Cooper, Mark. (2022). Mating Order Establishes Male Size Advantage in the Polygynandrous Millipede *Centrobolus inscriptus* Attems, 1928. *New Visions in Biological Science* Vol. 9, 46-51. <http://doi.org/10.9734/bpi/nvbs/v9/1894A>.
228. Cooper, Mark. (2022). Length and Width Correlations in *Centrobolus* Cook, 1897. *New Visions in Biological Science* Vol. 9, 39-45. <http://doi.org/10.9734/bpi/nvbs/v9/1893A>.
229. Cooper, Mark. (2022). The Copulation duration Allometry in Worm-like Millipedes (Diplopoda: Chilognatha: Helminthomorpha). *New Visions in Biological Science* Vol. 9, 29-38. <http://doi.org/10.9734/bpi/nvbs/v9/1892A>.
230. Cooper, Mark. (2022). The Copulation duration Allometry in *Centrobolus* (Diplopoda: Spirobolida: Pachybolidae). *New Visions in Biological Science* Vol. 9, 21-28. <http://doi.org/10.9734/bpi/nvbs/v9/1891A>.
231. Cooper, Mark. (2022). Assessment of Latitudinal Gradient in Species Richness of *Sphaerotherium*. *New Visions in Biological Science* Vol. 9, 14-20. <http://doi.org/10.9734/bpi/nvbs/v9/1885A>.

232. Cooper, Mark. (2022). Study About Size Dimorphism and Directional Selection in Forest Millipedes. *New Visions in Biological Science Vol. 9*, 7-13. <http://doi.org/10.9734/bpi/nvbs/v9/1884A>.
233. Cooper, Mark. (2022). Behavioral ecology of Centrobolus (Diplopoda, Spirobolida, Pachybolidae) in Southern Africa. *New Visions in Biological Science Vol. 9*, 1-6. <http://doi.org/10.9734/bpi/nvbs/v9/1883A>.
234. Cooper, Mark. (2022). Study on Zoomorphic Variation with Copulation Duration in Centrobolus. *New Visions in Biological Science Vol. 8*, 144-149. <http://doi.org/10.9734/bpi/nvbs/v8/1882A>.
235. Cooper, Mark. (2022). Assessment of Latitudinal Gradient in Gnomeskelus Species Richness. *New Visions in Biological Science Vol. 8*, 136-143. <http://doi.org/10.9734/bpi/nvbs/v8/1881A>.
236. Cooper, Mark. (2022). A Study on Centrobolus titanophilus Size Dimorphism Shows Width-Based Variability. *New Visions in Biological Science Vol. 8*, 129-135. <http://doi.org/10.9734/bpi/nvbs/v8/1880A>.
237. Cooper, Mark. (2022). Xylophagous Millipede Surface Area to Volume Ratios are Size-dependent in Forests: A Brief Study. *New Visions in Biological Science Vol. 8*, 120-128. <http://doi.org/10.9734/bpi/nvbs/v8/1879A>.
238. Cooper, Mark. (2022). Study on Size Dimorphism in Six Juliform Millipedes. *New Visions in Biological Science Vol. 8*, 113-119. <http://doi.org/10.9734/bpi/nvbs/v8/1878A>.
239. Cooper, Mark. (2022). Study on Year-round Correlation between Mass and Copulation Duration in Forest Millipedes. *New Visions in Biological Science Vol. 8*, 107-112. <http://doi.org/10.9734/bpi/nvbs/v8/1877A>.
240. Cooper, Mark. (2022). Longer Males Determined with Positive Skew and Kurtosis in Centrobolus (Diplopoda: Spirobolida: Pachybolidae). *New Visions in Biological Science Vol. 8*, 102-106. <http://doi.org/10.9734/bpi/nvbs/v8/1876A>.
241. Cooper, M. AIR PRESSURE IS NOT RELATED TO SPECIES RICHNESS IN PILL MILLIPEDES *SPHAEROTHERIUM BRANDT*, 1833. Int. j. eng. sci. invention res. dev. 2023; 10(6): 1553-1556. https://www.ijesird.com/wp-content/uploads/2024/05/chapter_18.pdf.
242. Cooper, M. HIGH AIR PRESSURE IS RELATED TO LOW SPECIES RICHNESS IN GNOMESKELUS ATTEMS, 1926. Int. j. eng. sci. invention res. dev. 2023; 10(6): 1548-1551. https://www.ijesird.com/wp-content/uploads/2024/05/chapter_17.pdf.
243. Cooper, M. I. AIR PRESSURE IS (INVERSELY) RELATED TO SPECIES RICHNESS IN DALODESMIDAE COOK, 1896A. Int. j. eng. sci. invention res. dev. 2023; 10(6): 1543-1547. https://www.ijesird.com/wp-content/uploads/2024/05/chapter_16.pdf.
244. Cooper, M. NO AIR PRESSURE-SPECIES RICHNESS RELATIONSHIP IN JULOMORPHIDAE VERHOEFF, 1924. Int. j. eng. sci. invention res. dev. 2023; 10 (6): 1540-1542. https://www.ijesird.com/wp-content/uploads/2024/05/chapter_15.pdf.
245. COOPER M. CURVED SURFACE AREA IS RELATED TO AT LEAST TWENTY FACTORS IN FOREST RED MILLIPEDES CENTROBOLUS COOK, 1897. Int. j. eng. sci. invention res. dev. 2023; 10(6): 1438-1509. https://www.ijesird.com/wp-content/uploads/2024/05/chapter_14.pdf.
246. Cooper M. VOLUME IS RELATED TO OCEAN WATER TEMPERATURES IN COASTAL FOREST RED MILLIPEDES CENTROBOLUS COOK, 1897. Int. j. eng. sci. invention res. dev. 2023; 10(6): 1410-1437. https://www.ijesird.com/wp-content/uploads/2024/05/December_17_23.pdf.
247. Cooper M. FACTORS RELATED TO PRECIPITATION IN FOREST RED MILLIPEDES CENTROBOLUS COOK, 1897. Int. j. eng. sci. invention res. dev. 2023; 10(6): 1376-1409. https://www.ijesird.com/wp-content/uploads/2024/05/December_16_23.pdf.
248. COOPER M. MONTH WITH THE LOWEST NUMBER OF RAINY DAYS IS RELATED TO AT LEAST FOUR FACTORS AND MONTH WITH THE HIGHEST NUMBER OF RAINY DAYS IS RELATED TO FIVE FACTORS IN FOREST RED MILLIPEDES CENTROBOLUS COOK, 1897. Int. j. eng. sci. invention res. dev. 2023; 10(6): 1355-1375. https://www.ijesird.com/wp-content/uploads/2024/05/December_15_23.pdf.
249. COOPER M. SECOND POLAR MOMENTS OF INERTNESS ARE RELATED TO TIME IN RED MILLIPEDES CENTROBOLUS COOK, 1897. Int. j. eng. sci. invention res. dev. 2023; 10(6): 1354. https://www.ijesird.com/wp-content/uploads/2024/05/December_14_23.pdf.
250. Cooper M. I. AIR PRESSURE IS RELATED TO AT LEAST SEVEN FACTORS AND DISTANCE TO THE NEAREST AIRPORT IS RELATED TO AT LEAST THREE FACTORS IN FOREST RED MILLIPEDES CENTROBOLUS COOK, 1897. Int. j. eng. sci. invention res. dev. 2023; 10(6): 1330-1354. https://www.ijesird.com/wp-content/uploads/2024/05/December_13_23.pdf.
251. Cooper M. SURFACE AREA, SURFACE AREA TO VOLUME RATIO, AND CLIMATIC CORRELATES IN PILL MILLIPEDES SPHAEROTHERIUM BRANDT, 1833. Int. j. eng. sci. invention res. dev. 2023; 10(6): 1299-1329. https://www.ijesird.com/wp-content/uploads/2024/05/December12_23.pdf.
252. Cooper Mark. DOES EJACULATE VOLUME, MASS AND COLEOPOD SPINE LENGTH AND NUMBER VARY WITH MOMENTS OF INERTIA AND SEX RATIO IN CENTROBOLUS COOK, 1897? Int. j. eng. sci. invention res. dev. 2023; 10(6): 1282-1298.

- https://www.ijesird.com/wp-content/uploads/2024/05/December11_23.pdf.
253. Cooper M. STERNITE PROMINENCE AND OCEAN WATER TEMPERATURE ARE RELATED TO ABUNDANCE IN *CENTROBOLUS* COOK, 1897. Int. j. eng. sci. invention res. dev. 2023; 10(6): 1266-1281. https://www.ijesird.com/wp-content/uploads/2024/05/December_10_23.pdf.
254. Cooper M. FACTORS RELATED TO SUNSHINE IN FOREST RED MILLIPEDES *CENTROBOLUS* COOK, 1897. Int. j. eng. sci. invention res. dev. 2023; 10(6): 1146-1265. https://www.ijesird.com/wp-content/uploads/2024/05/December_9_23.pdf.
255. Cooper M. I. MASS IS RELATED TO NINE FACTORS IN FOREST RED MILLIPEDES *CENTROBOLUS* COOK, 1897. Int. j. eng. sci. invention res. dev. 2023; 10(6): 1126-1142. https://www.ijesird.com/wp-content/uploads/2024/05/December_8_23.pdf.
256. Cooper M. LOWEST RELATIVE HUMIDITY IS RELATED TO HIGHEST RELATIVE HUMIDITY, HIGHEST OCEAN WATER TEMPERATURE, STERNITE PROMINENCE AND MOMENTS OF INERTIA AND HIGHEST RELATIVE HUMIDITY IS RELATED TO ABUNDANCE, MINIMUM AND MAXIMUM OCEAN WATER TEMPERATURES IN COASTAL FOREST RED MILLIPEDES *CENTROBOLUS* COOK, 1897. Int. j. eng. sci. invention res. dev. 2023; 10(6): 1104-1125. https://www.ijesird.com/wp-content/uploads/2024/05/December_7_23.pdf.
257. Cooper M. CORRELATION COEFFICIENT MATRIX FOR SEVEN FACTORS IN THE CLIMATE OF 23 LOCALITIES IN SOUTHERN AFRICA. International Journal of Engineering Science Invention Research & Development. 2023; 10(5): 820-992. https://www.ijesird.com/wp-content/uploads/2024/05/nov_11_23.pdf.
258. Cooper M. (2023). FEMALE SECOND POLAR MOMENTS OF INERTNESS ARE RELATED TO MAXIMUM PRECIPITATION IN FOREST RED MILLIPEDES *CENTROBOLUS* COOK, 1897. International Journal of Engineering Science Invention Research & Development; Vol. 10, Issue 4, October pp. 1-19. https://www.ijesird.com/wp-content/uploads/2024/05/chapter_1.pdf.
259. Cooper, M. AIR PRESSURE IS RELATED TO SPECIES RICHNESS IN FOREST RED MILLIPEDES *CENTROBOLUS* COOK, 1897. Int. j. eng. sci. invention res. dev. 2023; 10(6): 1510-1534. https://www.ijesird.com/wp-content/uploads/2024/05/december_7.pdf.
260. COOPER M. I. ABUNDANCE IS RELATED TO AT LEAST SEVEN FACTORS IN FOREST RED MILLIPEDES *CENTROBOLUS* COOK, 1897. Int. j. eng. sci. invention res. dev. 2023; 10(6): 1088-1103. https://www.ijesird.com/wp-content/uploads/2024/05/December_6_23.pdf.
261. Cooper M. VOLUMES AND CURVED SURFACE AREAS ARE DIFFERENT BETWEEN THE SEXES OF A PAIR OF SYMPATRIC FOREST RED MILLIPEDES *CENTROBOLUS* COOK, 1897. Int. j. eng. sci. invention res. dev. 2023; 10(6): 1074-1087. https://www.ijesird.com/wp-content/uploads/2024/05/December_5_23.pdf.
262. Cooper M. FACTORS RELATED TO TEMPERATURE IN FOREST RED MILLIPEDES *CENTROBOLUS* COOK, 1897. Int. j. eng. sci. invention res. dev. 2023; 10(6): 1039-1073. https://www.ijesird.com/wp-content/uploads/2024/05/December_4_23.pdf.
263. COOPER M. I. PROBABLE SOLUTION OF RAINY DAY VARIATIONS FOR SET MATING FREQUENCIES AND MALE AND FEMALE WIDTHS IN *CENTROBOLUS* COOK, 1897. Int. j. eng. sci. invention res. dev. 2023; 10(6): 1026-1038. https://www.ijesird.com/wp-content/uploads/2024/05/December_3_23.pdf.
264. Cooper, M. SURFACE AREA IS NOT RELATED TO MONTH WITH THE HIGHEST NUMBER OF RAINY DAYS, PRECIPITATION OR MAXIMUM TEMPERATURE IN FOREST RED MILLIPEDES *CENTROBOLUS* COOK, 1897. Int. j. eng. sci. invention res. dev. 2023; 10(6): 1008-1025. https://www.ijesird.com/wp-content/uploads/2024/05/December_2_23.pdf.
265. Cooper M. I. COPULATION DURATION IS RELATED TO AT LEAST EIGHT FACTORS IN FOREST RED MILLIPEDES *CENTROBOLUS* COOK, 1897. Int. j. eng. sci. invention res. dev. 2023; 10(6): 993-1007. https://www.ijesird.com/wp-content/uploads/2024/05/December_1_23.pdf.
266. COOPER M. I. SURFACE AREA IS RELATED TO AT LEAST ELEVEN FACTORS IN FOREST RED MILLIPEDES *CENTROBOLUS* COOK, 1897. Int. j. eng. sci. invention res. dev. 2023; 10(5): 792-819. https://www.ijesird.com/wp-content/uploads/2024/05/nov_10_23.pdf.
267. COOPER M. I. WIDTH IS RELATED TO AT LEAST ELEVEN FACTORS IN FOREST RED MILLIPEDES *CENTROBOLUS* COOK, 1897. Int. j. eng. sci. invention res. dev. 2023; 10(5): 759-791. https://www.ijesird.com/wp-content/uploads/2024/05/nov_9_23.pdf.
268. COOPER M. LENGTH IS RELATED TO AT LEAST THIRTEEN FACTORS IN FOREST RED MILLIPEDES *CENTROBOLUS* COOK, 1897. Int. j. eng. sci. invention res. dev. 2023; 10(5): 727-758. https://www.ijesird.com/wp-content/uploads/2024/05/nov_8_23.pdf.
269. Cooper M. AVERAGE TEMPERATURE, MINIMUM TEMPERATURE, MAXIMUM TEMPERATURE, PRECIPITATION, HUMIDITY, RAINY DAYS, AND AVERAGE SUN HOURS ACROSS THE DISTRIBUTION OF *CENTROBOLUS* IN SOUTHERN

- AFRICA. Int. j. eng. sci. invention res. dev. 2023; 10(5): 700-726. https://www.ijesird.com/wp-content/uploads/2024/05/nov_7_23.pdf.
270. Cooper M. SEXUAL SIZE DIMORPHISM IS CORRELATED TO MAXIMUM PRECIPITATION IN FOREST RED MILLIPEDES *CENTROBOLUS* COOK, 1897. Int. j. eng. sci. invention res. dev. 2023; 10(5): 673-699. https://www.ijesird.com/wp-content/uploads/2024/05/nov_6_23.pdf.
271. Cooper M. I. MATING FREQUENCY MAY BE RELATED TO AT LEAST SIXTEEN FACTORS IN FOREST RED MILLIPEDES *CENTROBOLUS* COOK, 1897. Int. j. eng. sci. invention res. dev. 2023; 10(5): 646-672. https://www.ijesird.com/wp-content/uploads/2024/05/nov_5_23.pdf.
272. Cooper M. HIGHEST DURATION OF SUNSHINE IS RELATED TO MALE SECOND POLAR MOMENTS OF INERTNESS IN FOREST RED MILLIPEDES *CENTROBOLUS* COOK, 1897. Int. j. eng. sci. invention res. dev. 2023; 10(5): 621-641. https://www.ijesird.com/wp-content/uploads/2024/05/nov_3_23.pdf.
273. Cooper M. SECOND POLAR MOMENTS OF INERTNESS ARE RELATED TO MATING FREQUENCIES, SPECIES VOLUME AND SURFACE AREA IN FOREST RED MILLIPEDES *CENTROBOLUS* COOK, 1897. Int. j. eng. sci. invention res. dev. 2023; 10(5): 593-620. https://www.ijesird.com/wp-content/uploads/2024/05/nov_2_23.pdf.
274. Cooper M. SECOND POLAR MOMENTS OF INERTNESS ARE DIFFERENT IN AND BETWEEN TWO PAIRS OF FOREST RED MILLIPEDES *CENTROBOLUS* COOK, 1897. Int. j. eng. sci. invention res. dev. 2023; 10(5): 573-592. https://www.ijesird.com/wp-content/uploads/2024/05/nov_1_23.pdf.
275. Cooper M. SEXUAL SIZE DIMORPHISM IS CORRELATED TO MEAN OCEAN WATER TEMPERATURE IN FOREST RED MILLIPEDES *CENTROBOLUS* COOK, 1897. Int. j. eng. sci. invention res. dev. 2023; 10(4): 554-572. https://www.ijesird.com/wp-content/uploads/2024/05/oct_14_23.pdf.
276. Cooper M. MALE SECOND POLAR MOMENTS OF INERTNESS ARE RELATED TO ALTITUDE IN FOREST RED MILLIPEDES *CENTROBOLUS* COOK, 1897. Int. j. eng. sci. invention res. dev. 2023; 10(4): 535-553. https://www.ijesird.com/wp-content/uploads/2024/05/oct_13_23.pdf.
277. Cooper M. SECOND POLAR MOMENTS OF INERTNESS ARE RELATED TO AVERAGE TEMPERATURE VARIATION IN FOREST RED MILLIPEDES *CENTROBOLUS* COOK, 1897. Int. j. eng. sci. invention res. dev. 2023; 10(4): 515-534. https://www.ijesird.com/wp-content/uploads/2024/05/oct_12_23.pdf.
278. Cooper M. SURFACE AREA-TO-VOLUME RATIO IS RELATED TO SPECIES RICHNESS IN *CENTROBOLUS* COOK, 1897. Int. j. eng. sci. invention res. dev. 2023; 10(4): 491-508. https://www.ijesird.com/wp-content/uploads/2024/05/oct10_23.pdf.
279. Cooper M. SPECIES RICHNESS IS marginally RELATED TO LENGTH IN FOREST RED MILLIPEDES *CENTROBOLUS* COOK, 1897. Int. j. eng. sci. invention res. dev. 2023; 10(4): 473-490. https://www.ijesird.com/wp-content/uploads/2024/05/oct9_23.pdf.
280. Cooper M. SPECIES RICHNESS IS RELATED TO ALTITUDE IN FOREST RED MILLIPEDES *CENTROBOLUS* COOK, 1897. Int. j. eng. sci. invention res. dev. 2023; 10(4): 456-472. https://www.ijesird.com/wp-content/uploads/2024/05/oct8_23.pdf.
281. Cooper M. SPECIES RICHNESS IS RELATED TO HIGHEST OCEAN WATER TEMPERATURES IN COASTAL FOREST RED MILLIPEDES *CENTROBOLUS* COOK, 1897. Int. j. eng. sci. invention res. dev. 2023; 10(4): 439-455. https://www.ijesird.com/wp-content/uploads/2024/05/oct7_23.pdf.
282. Cooper M. SPECIES RICHNESS IS RELATED TO LOWEST RELATIVE HUMIDITY IN FOREST RED MILLIPEDES *CENTROBOLUS* COOK, 1897. Int. j. eng. sci. invention res. dev. 2023; 10(4): 421-438. https://www.ijesird.com/wp-content/uploads/2024/05/oct6_23.pdf.
283. Cooper M. SPECIES RICHNESS IS RELATED TO MAXIMUM TEMPERATURE IN FOREST RED MILLIPEDES *CENTROBOLUS* COOK, 1897. Int. j. eng. sci. invention res. dev. 2023; 10(4): 403-420. https://www.ijesird.com/wp-content/uploads/2024/05/oct5_23.pdf.
284. Cooper M. SPECIES RICHNESS IS RELATED TO MEAN OCEAN WATER TEMPERATURE NEAR FOREST RED MILLIPEDES *CENTROBOLUS* COOK, 1897. Int. j. eng. sci. invention res. dev. 2023; 10(4): 386-402. https://www.ijesird.com/wp-content/uploads/2024/05/oct4_23.pdf.
285. Cooper M. SPECIES RICHNESS IS RELATED TO MINIMUM OCEAN WATER TEMPERATURE IN COASTAL FOREST RED MILLIPEDES *CENTROBOLUS* COOK, 1897. Int. j. eng. sci. invention res. dev. 2023; 10(4): 368-385. https://www.ijesird.com/wp-content/uploads/2024/05/oct3_23.pdf.
286. Cooper M. SPECIES RICHNESS IS RELATED TO PRECIPITATION IN FOREST RED MILLIPEDES *CENTROBOLUS* COOK, 1897. Int. j. eng. sci. invention res. dev. 2023; 10(4): 349-367. https://www.ijesird.com/wp-content/uploads/2024/05/oct2_23.pdf.

287. Cooper M. CURVED SURFACE AREA IS RELATED TO SPECIES RICHNESS IN FOREST RED MILLIPEDES *CENTROBOLUS* COOK, 1897. Int. j. eng. sci. invention res. dev. 2023; 10(4): 330-348. https://www.ijesird.com/wp-content/uploads/2024/05/oct1_23.pdf.
288. Cooper M. SEXUAL SIZE DIMORPHISM IS CORRELATED TO MINIMUM OCEAN WATER TEMPERATURE IN FOREST RED MILLIPEDES *CENTROBOLUS* COOK, 1897. Int. j. eng. sci. invention res. dev. 2023; 10(3): 302-320. https://www.ijesird.com/wp-content/uploads/2024/05/sep13_23.pdf.
289. Cooper M. MINIMUM OCEAN WATER TEMPERATURE IS RELATED TO ALTITUDE IN FOREST RED MILLIPEDES *CENTROBOLUS* COOK, 1897. Int. j. eng. sci. invention res. dev. 2023; 10(3): 283-301. https://www.ijesird.com/wp-content/uploads/2024/05/sep12_23.pdf.
290. Cooper M. SECOND POLAR MOMENTS OF INERTNESS ARE RELATED TO MINIMUM OCEAN WATER TEMPERATURES IN COASTAL FOREST RED MILLIPEDES *CENTROBOLUS* COOK, 1897. Int. j. eng. sci. invention res. dev. 2023; 10(3): 266-282. https://www.ijesird.com/wp-content/uploads/2024/05/sep11_23.pdf.
291. Cooper M. SURFACE AREA-TO-VOLUME RATIO ARE RELATED TO SECOND POLAR MOMENTS OF INERTNESS IN *CENTROBOLUS* COOK, 1897. Int. j. eng. sci. invention res. dev. 2023; 10(3): 249-265. https://www.ijesird.com/wp-content/uploads/2024/05/sep10_23.pdf.
292. Cooper M. SECOND POLAR MOMENTS OF INERTNESS ARE RELATED TO HIGHEST TOTAL HOURS OF SUNSHINE IN A MONTH IN FOREST RED MILLIPEDES *CENTROBOLUS* COOK, 1897. Int. j. eng. sci. invention res. dev. 2023; 10(3): 231-248. https://www.ijesird.com/wp-content/uploads/2024/05/sep9_23.pdf.
293. Cooper M. SECOND POLAR MOMENTS OF INERTNESS ARE RELATED TO MEAN OCEAN WATER TEMPERATURES IN COASTAL FOREST RED MILLIPEDES *CENTROBOLUS* COOK, 1897. Int. j. eng. sci. invention res. dev. 2023; 10(3): 214-230. https://www.ijesird.com/wp-content/uploads/2024/05/sep8_23.pdf.
294. Cooper M. STERNITE PROMINENCE IS RELATED TO SECOND POLAR MOMENTS OF INERTNESS IN *CENTROBOLUS* COOK, 1897. Int. j. eng. sci. invention res. dev. 2023; 10(3): 198-213. https://www.ijesird.com/wp-content/uploads/2024/05/sep7_23.pdf.
295. Cooper M. SECOND POLAR MOMENTS OF INERTNESS ARE RELATED TO LENGTH IN FOREST RED MILLIPEDES *CENTROBOLUS* COOK, 1897. Int. j. eng. sci. invention res. dev. 2023; 10(3): 181-197. https://www.ijesird.com/wp-content/uploads/2024/05/sep6_23.pdf.
296. Cooper M. SECOND POLAR MOMENTS OF INERTNESS ARE RELATED TO WIDTH IN FOREST RED MILLIPEDES *CENTROBOLUS* COOK, 1897. Int. j. eng. sci. invention res. dev. 2023; 10(3): 164-180. https://www.ijesird.com/wp-content/uploads/2024/05/sep5_23.pdf.
297. Cooper M. SECOND POLAR MOMENTS OF INERTNESS ARE RELATED TO MINIMUM PRECIPITATION IN FOREST RED MILLIPEDES *CENTROBOLUS* COOK, 1897. Int. j. eng. sci. invention res. dev. 2023; 10(3): 147-163. https://www.ijesird.com/wp-content/uploads/2024/05/sep4_23.pdf.
298. Cooper M. CURVED SURFACE AREA IS RELATED TO SECOND POLAR MOMENTS OF INERTIA IN FOREST RED MILLIPEDES *CENTROBOLUS* COOK, 1897. Int. j. eng. sci. invention res. dev. 2023; 10(3): 130-146. https://www.ijesird.com/wp-content/uploads/2024/05/sep3_23.pdf.
299. Cooper M. SECOND POLAR MOMENTS OF INERTNESS ARE RELATED TO MINIMUM TEMPERATURE IN FOREST RED MILLIPEDES *CENTROBOLUS* COOK, 1897. Int. j. eng. sci. invention res. dev. 2023; 10(3): 129-145. https://www.ijesird.com/wp-content/uploads/2024/05/sep2_23.pdf.
300. Cooper M. SECOND POLAR MOMENTS OF INERTNESS ARE RELATED TO SPECIES RICHNESS IN FOREST RED MILLIPEDES *CENTROBOLUS* COOK, 1897. Int. j. eng. sci. invention res. dev. 2023; 10(3): 113-128. https://www.ijesird.com/wp-content/uploads/2024/05/sep1_23.pdf.
301. Cooper M. SECOND POLAR MOMENTS OF INERTNESS ARE RELATED TO ABUNDANCE IN FOREST RED MILLIPEDES *CENTROBOLUS* COOK, 1897. Int. j. eng. sci. invention res. dev. 2023; 10(2): 89-99. https://www.ijesird.com/wp-content/uploads/2023/10/aug_2023_7.pdf.
302. Cooper M. MALE SECOND POLAR MOMENTS OF INERTNESS ARE RELATED TO COPULATION DURATION IN FOREST RED MILLIPEDES *CENTROBOLUS* COOK, 1897. Int. j. eng. sci. invention res. dev. 2023; 10(2): 77-88. https://www.ijesird.com/wp-content/uploads/2023/10/aug_2023_6.pdf.
303. Cooper M. SECOND POLAR MOMENTS OF INERTNESS ARE RELATED TO (MALE) MASS IN FOREST RED MILLIPEDES *CENTROBOLUS* COOK, 1897. Int. j. eng. sci. invention res. dev. 2023; 10(2): 66-76. https://www.ijesird.com/wp-content/uploads/2023/10/aug_2023_5.pdf.
304. Cooper M. SECOND POLAR MOMENTS OF INERTNESS ARE RELATED TO MOMENTS OF INERTIA IN FOREST RED MILLIPEDES *CENTROBOLUS* COOK, 1897. Int. j. eng. sci. invention

- res. dev. 2023; 10(2): 54-65. https://www.ijesird.com/wp-content/uploads/2023/10/aug_2023_4.pdf.
305. Cooper M. SURFACE AREA IS RELATED TO TEMPERATURE IN FOREST RED MILLIPEDES *CENTROBOLUS* COOK, 1897. Int. j. eng. sci. invention res. dev. 2023; 10(2): 37-53. https://www.ijesird.com/wp-content/uploads/2023/10/aug_2023_3.pdf.
306. Cooper M. (FEMALE) SECOND POLAR MOMENTS OF INERTNESS ARE RELATED TO SEXUAL SIZE DIMORPHISM IN FOREST RED MILLIPEDES *CENTROBOLUS* COOK, 1897. Int. j. eng. sci. invention res. dev. 2023; 10(2): 24-36. https://www.ijesird.com/wp-content/uploads/2023/10/aug_2023_2.pdf.
307. COOPER, MARK. AN INVERSE LATITUDINAL GRADIENT IN SPECIES RICHNESS OF FOREST RED MILLIPEDES *CHERSASTUS* ATTEMS, 1926 AND *CENTROBOLUS* COOK, 1897. Int. j. eng. sci. invention res. dev. 2023; 10(2): 5-23. https://www.ijesird.com/wp-content/uploads/2023/08/aug_2023_1.pdf.
308. Cooper M. Update: Random time-activity budgets in captive Southern Ground Hornbill *Bucorvus leadbeateri* [S Afr J Sci. 2013;109(7/8), Art. #a0028]. S Afr J Sci. 2023;119(7/8), Art. #a0028U. <https://doi.org/10.17159/sajs.2023/a0028U>.
309. COOPER, MARK. THE INVERSE LATITUDINAL GRADIENT IN SPECIES RICHNESS OF FOREST MILLIPEDES: *PACHYBOLIDAE* COOK, 1897. International Journal of Scientific Research, Technology & Innovation in Multidisciplinary Studies. 9th April 2023. Volume 4, pp. 80-89.
310. COOPER, MARK. MATING FREQUENCIES VARY WITH RAINY DAYS IN RED MILLIPEDES *CENTROBOLUS* COOK, 1897. Int. j. eng. sci. invention res. dev. 2023; 9(8): 263-270. https://www.ijesird.com/wp-content/uploads/2023/10/Fab_3_23.pdf.
311. COOPER, MARK. ABUNDANCE VARIES WITH MINIMUM TEMPERATURE IN RED MILLIPEDES *CENTROBOLUS* COOK, 1897. Int. j. eng. sci. invention res. dev. 2023; 9(8): 258-262. https://www.ijesird.com/wp-content/uploads/2023/10/Fab_2_23.pdf.
312. Cooper, Mark I. SEXUAL SIZE DIMORPHISM MAY BE RELATED TO SEX RATIOS IN *CENTROBOLUS* COOK, 1897. Int. j. eng. sci. invention res. dev. 2023; 9(8): 252-257. https://www.ijesird.com/wp-content/uploads/2023/10/FAB_1_23.pdf.
313. Cooper M. CURVED SURFACE AREAS IN *CENTROBOLUS* COOK, 1897. Universe Int. J. Interdiscip. Res. 2023; 3(8): <https://www.doi-ids.org/doi/10.2023-92114597/UIJIR>.
314. Cooper M. SECOND POLAR MOMENTS OF INERTNESS WITH TEMPERATURE IN FOREST RED MILLIPEDES *CENTROBOLUS* COOK, 1897. Universe Int. J. Interdiscip. Res. 2023; 3(8): 11-32. <http://www.doi-ids.org/doi/10.2023-86516136/UIJIR>.
315. Cooper, Mark I. 2023. SECOND POLAR MOMENTS OF AREA IN MALE AND FEMALE *CENTROBOLUS* COOK, 1897. *Munis Entomol. Zool.*, 18(1): 643-646. http://www.munisentzool.org/Issue/abstract/second-polar-moments-of-area-in-male-and-female-centrobolus-cook-1897_13951.
316. Cooper, Mark I. 2023. QUASIPROBABLE SOLUTION OF RAINY DAY VARIATIONS FOR SET MATING FREQUENCIES AND MALE AND FEMALE LENGTHS IN *CENTROBOLUS* COOK, 1897. *Munis Entomol. Zool.*, 18(1): 620-624. http://www.munisentzool.org/Issue/abstract/quasiprobable-solution-of-rainy-day-variations-for-set-mating-frequencies-and-male-and-female-lengths-in-centrobolus-cook-1897_13947.
317. Cooper Mark I. 2023. IS MASS CORRELATED WITH LENGTH AMONG RED MILLIPEDES *CENTROBOLUS* COOK, 1897? *Munis Entomol. Zool.*, 18(1): 404-408. http://www.munisentzool.org/Issue/abstract/is-mass-correlated-with-length-among-red-millipedes-centrobolus-cook-1897_13922.
318. Cooper Mark I. 2023. THE HIGHEST DAILY HOURS OF SUNSHINE ARE RELATED TO LONGITUDE ACROSS THE DISTRIBUTION OF PILL MILLIPEDES *SPHAEROTHERIUM* BRANDT, 1833. *Munis Entomol. Zool.*, 18(1): 385-387. http://www.munisentzool.org/Issue/abstract/the-highest-daily-hours-of-sunshine-are-related-to-longitude-across-the-distribution-of-pill-millipedes-sphaerotherium-brandt-1833_13920.
319. Cooper Mark I. 2023. DOES SEXUAL SIZE DIMORPHISM VARY WITH THE FEWEST DAILY HOURS OF SUNSHINE IN RED MILLIPEDES *CENTROBOLUS* COOK, 1897? *Munis Entomol. Zool.*, 18(1): 373-375. http://www.munisentzool.org/Issue/abstract/does-sexual-size-dimorphism-vary-with-the-fewest-daily-hours-of-sunshine-in-red-millipedes-centrobolus-cook-1897_13918.
320. Cooper Mark I. 2023. PRECIPITATION DURING THE DRIEST MONTH IS marginally RELATED TO LONGITUDE ACROSS THE DISTRIBUTION OF RED MILLIPEDES *CENTROBOLUS* COOK, 1897. *Munis Entomol. Zool.*, 18(1): 339-341. http://www.munisentzool.org/Issue/abstract/precipitation-during-the-driest-month-is-marginally-related-to-longitude-across-the-distribution-of-red-millipedes-centrobolus-cook-1897_13915.
321. COOPER, M. I. THE WETTEST MONTHS VARY WITH THE DISTANCE TO THE CLOSEST AIRPORT ACROSS THE DISTRIBUTION OF PILL MILLIPEDES *SPHAEROTHERIUM* BRANDT, 1833. Int. j. eng. sci. invention res. dev. 2024; 10(12): 3297-3316. <https://www.ijesird.com/wp-content/uploads/2024/06/59.pdf>.
322. COOPER, M. I. THE DIFFERENCE BETWEEN THE DRIEST AND WETTEST MONTHS VARY WITH THE DISTANCE TO THE CLOSEST AIRPORT ACROSS

- THE DISTRIBUTION OF PILL MILLIPEDES *SPHAEROTHERIUM* BRANDT, 1833. Int. j. eng. sci. invention res. dev. 2024; 10(12): 3277-3296. <https://www.ijesird.com/wp-content/uploads/2024/06/58.pdf>.
- 323.COOPER, M. I. SURFACE AREA IS RELATED TO WIDTH IN FOREST RED MILLIPEDES *CENTROBOLUS* COOK, 1897. Int. j. eng. sci. invention res. dev. 2024; 10(12): 3256-3276. <https://www.ijesird.com/wp-content/uploads/2024/06/57.pdf>.
- 324.COOPER, M. I. SURFACE AREA IS RELATED TO LENGTH IN FOREST RED MILLIPEDES *CENTROBOLUS* COOK, 1897. Int. j. eng. sci. invention res. dev. 2024; 10(12): 3235-3255. <https://www.ijesird.com/wp-content/uploads/2024/06/56.pdf>.
- 325.COOPER, M. I. MOMENTS OF INERTIA ARE RELATED TO WIDTH IN FOREST RED MILLIPEDES *CENTROBOLUS* COOK, 1897. Int. j. eng. sci. invention res. dev. 2024; 10(12): 3215-3234. <https://www.ijesird.com/wp-content/uploads/2024/06/55.pdf>.
- 326.COOPER, M. LENGTH IS RELATED TO HIGHEST TOTAL HOURS OF SUNSHINE IN A MONTH IN FOREST RED MILLIPEDES *CENTROBOLUS* COOK, 1897. Int. j. eng. sci. invention res. dev. 2024; 10(11): 3102-3129. <https://www.ijesird.com/wp-content/uploads/2024/05/54.pdf>.
- 327.COOPER, M. I. FEMALE WIDTH IS RELATED TO HOURS OF SUNSHINE THROUGHOUT THE YEAR IN FOREST RED MILLIPEDES *CENTROBOLUS* COOK, 1897. Int. j. eng. sci. invention res. dev. 2024; 10(11): 3073-3101. <https://www.ijesird.com/wp-content/uploads/2024/05/53.pdf>.
- 328.COOPER, M. LOWEST NUMBER OF DAILY HOURS OF SUNSHINE IN A DAY IS RELATED TO LENGTH IN FOREST RED MILLIPEDES *CENTROBOLUS* COOK, 1897. Int. j. eng. sci. invention res. dev. 2024; 10(11): 3044-3072. <https://www.ijesird.com/wp-content/uploads/2024/05/52.pdf>.
- 329.COOPER, M. LENGTH IS RELATED TO HOURS OF SUNSHINE THROUGHOUT THE YEAR IN FOREST RED MILLIPEDES *CENTROBOLUS* COOK, 1897. Int. j. eng. sci. invention res. dev. 2024; 10(11): 3015-3043. <https://www.ijesird.com/wp-content/uploads/2024/05/51.pdf>.
- 330.COOPER, M. WIDTH IS RELATED HIGHEST TOTAL HOURS OF SUNSHINE IN A MONTH IN FOREST RED MILLIPEDES *CENTROBOLUS* COOK, 1897. Int. j. eng. sci. invention res. dev. 2024; 10(11): 2989-3014. <https://www.ijesird.com/wp-content/uploads/2024/05/50.pdf>.
- 331.Cooper, M. CURVED SURFACE AREA IS RELATED TO MEAN OCEAN WATER TEMPERATURES IN COASTAL FOREST RED MILLIPEDES *CENTROBOLUS* COOK, 1897. Int. j. eng. sci. invention res. dev. 2024; 10(11): 2964-2988. <https://www.ijesird.com/wp-content/uploads/2024/05/49.pdf>.
- 332.Cooper, M. CURVED SURFACE AREA IS RELATED TO MINIMUM OCEAN WATER TEMPERATURES IN COASTAL FOREST RED MILLIPEDES *CENTROBOLUS* COOK, 1897. Int. j. eng. sci. invention res. dev. 2024; 10(11): 2939-2963. <https://www.ijesird.com/wp-content/uploads/2024/05/48.pdf>.
- 333.Cooper, M. CURVED SURFACE AREA IS RELATED TO HIGHEST OCEAN WATER TEMPERATURES IN COASTAL FOREST RED MILLIPEDES *CENTROBOLUS* COOK, 1897. Int. j. eng. sci. invention res. dev. 2024; 10(11): 2914-2938. <https://www.ijesird.com/wp-content/uploads/2024/05/47.pdf>.
- 334.Cooper, M. CURVED SURFACE AREA IS RELATED TO AVERAGE TEMPERATURE VARIATION IN FOREST RED MILLIPEDES *CENTROBOLUS* COOK, 1897. Int. j. eng. sci. invention res. dev. 2024; 10(11): 2883-2908. <https://www.ijesird.com/wp-content/uploads/2024/05/46.pdf>.
- 335.Cooper, M. CURVED SURFACE AREA IS RELATED TO MINIMUM TEMPERATURE IN FOREST RED MILLIPEDES *CENTROBOLUS* COOK, 1897. Int. j. eng. sci. invention res. dev. 2024; 10(11): 2857-2882. <https://www.ijesird.com/wp-content/uploads/2024/05/45.pdf>.
- 336.Cooper, M. CURVED SURFACE AREA IS RELATED TO LONGITUDE IN FOREST RED MILLIPEDES *CENTROBOLUS* COOK, 1897. Int. j. eng. sci. invention res. dev. 2024; 10(11): 2831-2856. <https://www.ijesird.com/wp-content/uploads/2024/05/44.pdf>.
- 337.COOPER, M. CURVED SURFACE AREA IS RELATED TO WIDTH IN FOREST RED MILLIPEDES *CENTROBOLUS* COOK, 1897. Int. j. eng. sci. invention res. dev. 2024; 10(11): 2806-2830. <https://www.ijesird.com/wp-content/uploads/2024/05/43.pdf>.
- 338.COOPER, M. CURVED SURFACE AREA IS RELATED TO LENGTH IN FOREST RED MILLIPEDES *CENTROBOLUS* COOK, 1897. Int. j. eng. sci. invention res. dev. 2024; 10(11): 2780-2805. <https://www.ijesird.com/wp-content/uploads/2024/05/42.pdf>.
- 339.COOPER, M. CURVED SURFACE AREA IS RELATED TO SEX RATIO IN FOREST RED MILLIPEDES *CENTROBOLUS* COOK, 1897. Int. j. eng. sci. invention res. dev. 2024; 10(11): 2755-2779. <https://www.ijesird.com/wp-content/uploads/2024/05/41.pdf>.
- 340.COOPER, MARK IAN. CURVED SURFACE AREA IS RELATED TO HOURS OF SUNSHINE THROUGHOUT

- THE YEAR IN FOREST RED MILLIPEDES *CENTROBOLUS* COOK, 1897. Int. j. eng. sci. invention res. dev. 2024; 10(10): 2523-2550. <https://www.ijesird.com/wp-content/uploads/2024/05/40.pdf>.
341. COOPER, MARK. VOLUME IS CORRELATED TO MINIMUM TEMPERATURE IN FOREST RED MILLIPEDES *CENTROBOLUS* COOK, 1897. Int. j. eng. sci. invention res. dev. 2024; 10(10): 2496-2522. <https://www.ijesird.com/wp-content/uploads/2024/05/39.pdf>.
342. COOPER, MARK. MASS IS CORRELATED TO MONTH WITH THE HIGHEST NUMBER OF RAINY DAYS IN FOREST RED MILLIPEDES *CENTROBOLUS* COOK, 1897. Int. j. eng. sci. invention res. dev. 2024; 10(10): 2470-2495. <https://www.ijesird.com/wp-content/uploads/2024/05/38.pdf>.
343. COOPER, MARK IAN. MASS IS CORRELATED TO LOWEST RELATIVE HUMIDITY IN FOREST RED MILLIPEDES *CENTROBOLUS* COOK, 1897. Int. j. eng. sci. invention res. dev. 2024; 10(10): 2444-2469. <https://www.ijesird.com/wp-content/uploads/2024/05/37.pdf>.
344. Cooper, Mark Ian. COPULATION DURATION IS MODELLED TO MINIMUM TEMPERATURE IN FOREST RED MILLIPEDES *CENTROBOLUS* COOK, 1897. Int. j. eng. sci. invention res. dev. 2024; 10(10): 2508-2534. <https://www.ijesird.com/wp-content/uploads/2024/05/36.pdf>.
345. Cooper, M. IS MATING FREQUENCY RELATED TO HOURS OF SUNSHINE THROUGHOUT THE YEAR IN FOREST RED MILLIPEDES *CENTROBOLUS* COOK, 1897? Int. j. eng. sci. invention res. dev. 2024; 10(10): 2478-2507. <https://www.ijesird.com/wp-content/uploads/2024/05/35.pdf>.
346. Cooper, Mark Ian. IS MATING FREQUENCY RELATED TO LOWEST RELATIVE HUMIDITY IN FOREST RED MILLIPEDES *CENTROBOLUS* COOK, 1897? Int. j. eng. sci. invention res. dev. 2024; 10(10): 2451-2477. <https://www.ijesird.com/wp-content/uploads/2024/05/34.pdf>.
347. Cooper, Mark Ian. IS MATING FREQUENCY RELATED TO MINIMUM TEMPERATURE IN FOREST RED MILLIPEDES *CENTROBOLUS* COOK, 1897? Int. j. eng. sci. invention res. dev. 2024; 10(10): 2423-2450. <https://www.ijesird.com/wp-content/uploads/2024/05/33.pdf>.
348. Cooper, Mark Ian. IS MATING FREQUENCY RELATED TO MAXIMUM TEMPERATURE IN FOREST RED MILLIPEDES *CENTROBOLUS* COOK, 1897? Int. j. eng. sci. invention res. dev. 2024; 10(10): 2392-2422. <https://www.ijesird.com/wp-content/uploads/2024/05/32.pdf>.
349. Cooper, M. Ian. MOMENTS OF INERTIA ARE RELATED TO MAXIMUM TEMPERATURE IN FOREST RED MILLIPEDES *CENTROBOLUS* COOK, 1897. Int. j. eng. sci. invention res. dev. 2024; 10(9): 2358-2384. https://www.ijesird.com/wp-content/uploads/2024/05/ch_31.pdf.
350. Cooper, M. Ian. IS MATING FREQUENCY RELATED TO TEMPERATURE IN FOREST RED MILLIPEDES *CENTROBOLUS* COOK, 1897? Int. j. eng. sci. invention res. dev. 2024; 10(9): 2333-2357. https://www.ijesird.com/wp-content/uploads/2024/05/ch_30.pdf.
351. Cooper, M. Ian. TEMPERATURE IS RELATED TO MINIMUM TEMPERATURE IN FOREST RED MILLIPEDES *CENTROBOLUS* COOK, 1897. Int. j. eng. sci. invention res. dev. 2024; 10(9): 2308-2332. https://www.ijesird.com/wp-content/uploads/2024/05/ch_29.pdf.
352. Cooper, M. Ian. IS MATING FREQUENCY RELATED TO HIGHEST TOTAL HOURS OF SUNSHINE THROUGHOUT A MONTH IN FOREST RED MILLIPEDES *CENTROBOLUS* COOK, 1897? Int. j. eng. sci. invention res. dev. 2024; 10(9): 2283-2307. https://www.ijesird.com/wp-content/uploads/2024/05/ch_28.pdf.
353. Cooper, M. Ian. IS MATING FREQUENCY RELATED TO PRECIPITATION IN FOREST RED MILLIPEDES *CENTROBOLUS* COOK, 1897? Int. j. eng. sci. invention res. dev. 2024; 10(9): 2259-2282. https://www.ijesird.com/wp-content/uploads/2024/05/ch_27.pdf.
354. Cooper, M. Ian. TEMPERATURE IS RELATED TO MAXIMUM TEMPERATURE IN FOREST RED MILLIPEDES *CENTROBOLUS* COOK, 1897. Int. j. eng. sci. invention res. dev. 2024; 10(9): 2235-2258. https://www.ijesird.com/wp-content/uploads/2024/05/ch_26.pdf.
355. Cooper, M. Ian. PRECIPITATION IS RELATED TO TEMPERATURE IN FOREST RED MILLIPEDES *CENTROBOLUS* COOK, 1897. Int. j. eng. sci. invention res. dev. 2024; 10(9): 2211-2234. https://www.ijesird.com/wp-content/uploads/2024/05/ch_25.pdf.
356. Cooper, M. Ian. HIGHEST TOTAL HOURS OF SUNSHINE THROUGHOUT A MONTH ARE RELATED TO TEMPERATURE IN FOREST RED MILLIPEDES *CENTROBOLUS* COOK, 1897. Int. j. eng. sci. invention res. dev. 2024; 10(9): 2187-2210. https://www.ijesird.com/wp-content/uploads/2024/05/ch_24.pdf.
357. Cooper, M. Ian. HIGHEST TOTAL HOURS OF SUNSHINE THROUGHOUT A MONTH ARE RELATED TO PRECIPITATION IN FOREST RED MILLIPEDES *CENTROBOLUS* COOK, 1897. Int. j. eng. sci. invention res. dev. 2024; 10(9): 2163-2186. https://www.ijesird.com/wp-content/uploads/2024/05/ch_23.pdf.
358. Cooper, M. Ian. COPULATION DURATION IS RELATED TO MONTH WITH THE HIGHEST

- NUMBER OF RAINY DAYS IN FOREST RED MILLIPEDES *CENTROBOLUS* COOK, 1897. Int. j. eng. sci. invention res. dev. 2024; 10(9): 2138-2161. https://www.ijesird.com/wp-content/uploads/2024/05/ch_22.pdf.
359. Cooper, M. Ian. HIGHEST TOTAL HOURS OF SUNSHINE THROUGHOUT A MONTH ARE RELATED TO MONTH WITH THE HIGHEST NUMBER OF RAINY DAYS IN FOREST RED MILLIPEDES *CENTROBOLUS* COOK, 1897. Int. j. eng. sci. invention res. dev. 2024; 10(9): 2114-2137. https://www.ijesird.com/wp-content/uploads/2024/05/ch_21.pdf.
360. Cooper, M. Ian. HIGHEST TOTAL HOURS OF SUNSHINE THROUGHOUT A MONTH ARE RELATED TO SPECIES VOLUME IN FOREST RED MILLIPEDES *CENTROBOLUS* COOK, 1897. Int. j. eng. sci. invention res. dev. 2024; 10(9): 2090-2113. https://www.ijesird.com/wp-content/uploads/2024/05/ch_20.pdf.
361. Cooper, M. Ian. HOURS OF SUNSHINE THROUGHOUT THE YEAR ARE RELATED TO SPECIES VOLUME IN FOREST RED MILLIPEDES *CENTROBOLUS* COOK, 1897. Int. j. eng. sci. invention res. dev. 2024; 10(9): 2066-2089. https://www.ijesird.com/wp-content/uploads/2024/05/ch_19.pdf.
362. COOPER, M. I. MOMENTS OF INERTIA ARE RELATED TO LENGTH IN FOREST RED MILLIPEDES *CENTROBOLUS* COOK, 1897. Int. j. eng. sci. invention res. dev. 2024; 10(12): 3195-3214. https://www.ijesird.com/wp-content/uploads/2024/06/june_4_24.pdf.
363. COOPER, M. I. WIDTH MODELS WITH MATING FREQUENCY IN FOREST RED MILLIPEDES *CENTROBOLUS* COOK, 1897. Int. j. eng. sci. invention res. dev. 2024; 10(12): 3175-3194. https://www.ijesird.com/wp-content/uploads/2024/06/june_3_24.pdf.
364. COOPER, M. I. FEMALE WIDTH IS RELATED TO LOWEST NUMBER OF HOURS OF SUNSHINE IN A DAY IN FOREST RED MILLIPEDES *CENTROBOLUS* COOK, 1897. Int. j. eng. sci. invention res. dev. 2024; 10(12): 3154-3174. https://www.ijesird.com/wp-content/uploads/2024/06/june_2_24.pdf.
365. Cooper, M. CLIMATIC CORRELATES IN PILL MILLIPEDES *SPHAEROTHERIUM* BRANDT, 1833. Int. j. eng. sci. invention res. dev. 2024; 10(12): 3130-3153. https://www.ijesird.com/wp-content/uploads/2024/06/june_1_24.pdf.
366. COOPER, M. COPULATION DURATION IS RELATED TO CURVED SURFACE AREA IN FOREST RED MILLIPEDES *CENTROBOLUS* COOK, 1897. Int. j. eng. sci. invention res. dev. 2024; 10(11): 2731-2754. https://www.ijesird.com/wp-content/uploads/2024/05/may_7_24.pdf.
367. COOPER, M. CURVED SURFACE AREA IS RELATED TO MOMENTS OF INERTIA IN FOREST RED MILLIPEDES *CENTROBOLUS* COOK, 1897. Int. j. eng. sci. invention res. dev. 2024; 10(11): 2706-2730. https://www.ijesird.com/wp-content/uploads/2024/05/may_6_24.pdf.
368. COOPER, M. CURVED SURFACE AREA IS RELATED TO MASS IN FOREST RED MILLIPEDES *CENTROBOLUS* COOK, 1897. Int. j. eng. sci. invention res. dev. 2024; 10(11): 2681-2705. https://www.ijesird.com/wp-content/uploads/2024/05/may_5_24.pdf.
369. COOPER, M. CURVED SURFACE AREA IS RELATED TO TEMPERATURE IN FOREST RED MILLIPEDES *CENTROBOLUS* COOK, 1897. Int. j. eng. sci. invention res. dev. 2024; 10(11): 2655-2680. https://www.ijesird.com/wp-content/uploads/2024/05/may_4_24.pdf.
370. COOPER, M. CURVED SURFACE AREA IS RELATED TO SPECIES VOLUME IN FOREST RED MILLIPEDES *CENTROBOLUS* COOK, 1897. Int. j. eng. sci. invention res. dev. 2024; 10(11): 2630-2654. https://www.ijesird.com/wp-content/uploads/2024/05/may_3_24.pdf.
371. COOPER, M. CURVED SURFACE AREA IS RELATED TO SURFACE AREA IN FOREST RED MILLIPEDES *CENTROBOLUS* COOK, 1897. Int. j. eng. sci. invention res. dev. 2024; 10(11): 2605-2629. https://www.ijesird.com/wp-content/uploads/2024/05/may_2_24.pdf.
372. COOPER, M. CURVED SURFACE AREA IS RELATED TO LOWEST HOURS OF SUNSHINE IN A DAY IN FOREST RED MILLIPEDES *CENTROBOLUS* COOK, 1897. Int. j. eng. sci. invention res. dev. 2024; 10(11): 2580-2604. https://www.ijesird.com/wp-content/uploads/2024/05/may_1_24.pdf.
373. COOPER, M. CURVED SURFACE AREA IS RELATED TO HIGHEST HOURS OF SUNSHINE THROUGHOUT A MONTH IN FOREST RED MILLIPEDES *CENTROBOLUS* COOK, 1897. Int. j. eng. sci. invention res. dev. 2024; 10(10): 2556-2579. https://www.ijesird.com/wp-content/uploads/2024/05/apr_5_24.pdf.
374. COOPER, MARK IAN. MASS IS INVERSELY CORRELATED TO MINIMUM TEMPERATURE IN FOREST RED MILLIPEDES *CENTROBOLUS* COOK, 1897. Int. j. eng. sci. invention res. dev. 2024; 10(10): 2418-2443. https://www.ijesird.com/wp-content/uploads/2024/05/apr_3_24.pdf.
375. Cooper, M. MASS IS CORRELATED TO PRECIPITATION IN FOREST RED MILLIPEDES *CENTROBOLUS* COOK, 1897. Int. j. eng. sci. invention res. dev. 2024; 10(10): 2392-2417. https://www.ijesird.com/wp-content/uploads/2024/05/april_2_24.pdf.

376. Cooper, M. Ian. HOURS OF SUNSHINE THROUGHOUT THE YEAR IS RELATED TO MOMENTS OF INERTIA IN FOREST RED MILLIPEDES *CENTROBOLUS* COOK, 1897. Int. j. eng. sci. invention res. dev. 2024; 10(9): 2040-2065. https://www.ijesird.com/wp-content/uploads/2024/05/march_6_24.pdf.
377. Cooper, M. Ian. HOURS OF SUNSHINE THROUGHOUT THE YEAR IS RELATED TO PRECIPITATION IN FOREST RED MILLIPEDES *CENTROBOLUS* COOK, 1897. Int. j. eng. sci. invention res. dev. 2024; 10(9): 2014-2039. https://www.ijesird.com/wp-content/uploads/2024/05/march_5_24.pdf.
378. Cooper, M. Ian. HOURS OF SUNSHINE THROUGHOUT THE YEAR IS RELATED TO SURFACE AREA IN FOREST RED MILLIPEDES *CENTROBOLUS* COOK, 1897. Int. j. eng. sci. invention res. dev. 2024; 10(9): 1988-2013. https://www.ijesird.com/wp-content/uploads/2024/05/march_4_24.pdf.
379. Cooper, M. Ian. LOWEST RELATIVE HUMIDITY IS RELATED TO MOMENTS OF INERTIA IN FOREST RED MILLIPEDES *CENTROBOLUS* COOK, 1897. Int. j. eng. sci. invention res. dev. 2024; 10(9): 1962-1987. https://www.ijesird.com/wp-content/uploads/2024/05/march_3_24.pdf.
380. Cooper, M. Ian. COPULATION DURATION IS RELATED TO LOWEST RELATIVE HUMIDITY IN FOREST RED MILLIPEDES *CENTROBOLUS* COOK, 1897. Int. j. eng. sci. invention res. dev. 2024; 10(9): 1936-1961. https://www.ijesird.com/wp-content/uploads/2024/05/march_2_24.pdf.
381. Cooper, M. Ian. HOURS OF SUNSHINE THROUGHOUT THE YEAR IS RELATED TO TEMPERATURE IN FOREST RED MILLIPEDES *CENTROBOLUS* COOK, 1897. Int. j. eng. sci. invention res. dev. 2024; 10(9): 1912-1935. https://www.ijesird.com/wp-content/uploads/2024/05/march_1_24.pdf.
382. Cooper, M. AIR PRESSURE IS NOT RELATED TO SPECIES RICHNESS IN PILL MILLIPEDES SPHAEROTHERIIDAE BRANDT, 1833. Int. j. eng. sci. invention res. dev. 2024; 10(8): 1908-1911. https://www.ijesird.com/wp-content/uploads/2024/05/feb_15_24.pdf.
383. Cooper, M. LOWEST NUMBER OF DAILY HOURS OF SUNSHINE IS RELATED TO LONGITUDE IN FOREST RED MILLIPEDES *CENTROBOLUS* COOK, 1897. Int. j. eng. sci. invention res. dev. 2024; 10(8): 1884-1907. https://www.ijesird.com/wp-content/uploads/2024/05/feb_14_24.pdf.
384. Cooper, M. LOWEST NUMBER OF DAILY HOURS OF SUNSHINE IS RELATED TO MASS IN FOREST RED MILLIPEDES *CENTROBOLUS* COOK, 1897. Int. j. eng. sci. invention res. dev. 2024; 10(8): 1860-1883. https://www.ijesird.com/wp-content/uploads/2024/05/feb13_24.pdf.
385. Cooper, M. LOWEST NUMBER OF DAILY HOURS OF SUNSHINE IS RELATED TO MOMENTS OF INERTIA IN FOREST RED MILLIPEDES *CENTROBOLUS* COOK, 1897. Int. j. eng. sci. invention res. dev. 2024; 10(8): 1836-1859. https://www.ijesird.com/wp-content/uploads/2024/05/feb12_24.pdf.
386. Cooper, M. LOWEST NUMBER OF DAILY HOURS OF SUNSHINE IS RELATED TO LATITUDE IN FOREST RED MILLIPEDES *CENTROBOLUS* COOK, 1897. Int. j. eng. sci. invention res. dev. 2024; 10(8): 1810-1835. https://www.ijesird.com/wp-content/uploads/2024/05/feb11_24.pdf.
387. Cooper, M. LOWEST NUMBER OF DAILY HOURS OF SUNSHINE IS RELATED TO MONTH WITH THE HIGHEST NUMBER OF RAINY DAYS IN FOREST RED MILLIPEDES *CENTROBOLUS* COOK, 1897. Int. j. eng. sci. invention res. dev. 2024; 10(8): 1784-1809. https://www.ijesird.com/wp-content/uploads/2024/05/feb10_24.pdf.
388. Cooper, M. LOWEST NUMBER OF DAILY HOURS OF SUNSHINE IS RELATED TO TOTAL HOURS OF SUNSHINE IN A YEAR IN FOREST RED MILLIPEDES *CENTROBOLUS* COOK, 1897. Int. j. eng. sci. invention res. dev. 2024; 10(8): 1758-1783. https://www.ijesird.com/wp-content/uploads/2024/05/feb9_24.pdf.
389. Cooper, M. LOWEST NUMBER OF DAILY HOURS OF SUNSHINE IS RELATED TO MAXIMUM TEMPERATURE IN FOREST RED MILLIPEDES *CENTROBOLUS* COOK, 1897. Int. j. eng. sci. invention res. dev. 2024; 10(8): 1734-1757. https://www.ijesird.com/wp-content/uploads/2024/05/feb8_24.pdf.
390. Cooper, M. LOWEST NUMBER OF DAILY HOURS OF SUNSHINE IS RELATED TO MINIMUM TEMPERATURE IN FOREST RED MILLIPEDES *CENTROBOLUS* COOK, 1897. Int. j. eng. sci. invention res. dev. 2024; 10(8): 1710-1733. https://www.ijesird.com/wp-content/uploads/2024/05/feb7_24.pdf.
391. Cooper, M. HOURS OF SUNSHINE THROUGHOUT THE YEAR IS RELATED TO HIGHEST TOTAL HOURS OF SUNSHINE IN A MONTH IN FOREST RED MILLIPEDES *CENTROBOLUS* COOK, 1897. Int. j. eng. sci. invention res. dev. 2024; 10(8): 1684-1709. https://www.ijesird.com/wp-content/uploads/2024/05/feb6_24.pdf.
392. Cooper, M. LOWEST NUMBER OF DAILY HOURS OF SUNSHINE IS RELATED TO PRECIPITATION IN FOREST RED MILLIPEDES *CENTROBOLUS* COOK, 1897. Int. j. eng. sci. invention res. dev. 2024; 10(8): 1660-1683. https://www.ijesird.com/wp-content/uploads/2024/05/feb5_24.pdf.

393. Cooper, M. LOWEST NUMBER OF DAILY HOURS OF SUNSHINE IS RELATED TO MONTH WITH THE HIGHEST NUMBER OF RAINY DAYS IN FOREST RED MILLIPEDES *CENTROBOLUS* COOK, 1897. Int. j. eng. sci. invention res. dev. 2024; 10(8): 1636-1659. https://www.ijesird.com/wp-content/uploads/2024/05/Feb4_24.pdf.
394. Cooper, M. LOWEST NUMBER OF DAILY HOURS OF SUNSHINE IS RELATED TO SURFACE AREA IN FOREST RED MILLIPEDES *CENTROBOLUS* COOK, 1897. Int. j. eng. sci. invention res. dev. 2024; 10(8): 1610-1635. https://www.ijesird.com/wp-content/uploads/2024/05/Feb3_24.pdf.
395. Cooper, M. LOWEST NUMBER OF DAILY HOURS OF SUNSHINE IS RELATED TO SPECIES VOLUME IN FOREST RED MILLIPEDES *CENTROBOLUS* COOK, 1897. Int. j. eng. sci. invention res. dev. 2024; 10(8): 1584-1608. https://www.ijesird.com/wp-content/uploads/2024/05/Feb2_24.pdf.
396. Cooper, M. LOWEST NUMBER OF DAILY HOURS OF SUNSHINE IS RELATED TO TEMPERATURE IN FOREST RED MILLIPEDES *CENTROBOLUS* COOK, 1897. Int. j. eng. sci. invention res. dev. 2024; 10(8): 1557-1582. https://www.ijesird.com/wp-content/uploads/2024/05/Feb1_24.pdf.
397. COOPER, MARK. ABUNDANCE IS RELATED TO HIGHEST RELATIVE HUMIDITY IN FOREST RED MILLIPEDES *CENTROBOLUS* COOK, 1897. Int. j. eng. sci. invention res. dev. 2024; 11(1): 269-285. <https://www.ijesird.com/wp-content/uploads/2024/07/71.pdf>.
398. COOPER, MARK. MONTH WITH THE HIGHEST NUMBER OF RAINY DAYS IS RELATED TO HIGHEST RELATIVE HUMIDITY IN FOREST RED MILLIPEDES *CENTROBOLUS* COOK, 1897. Int. j. eng. sci. invention res. dev. 2024; 11(1): 251-268. <https://www.ijesird.com/wp-content/uploads/2024/07/70.pdf>.
399. COOPER, MARK. LOWEST RELATIVE HUMIDITY IS RELATED TO HIGHEST RELATIVE HUMIDITY IN FOREST RED MILLIPEDES *CENTROBOLUS* COOK, 1897. Int. j. eng. sci. invention res. dev. 2024; 11(1): 233-250. <https://www.ijesird.com/wp-content/uploads/2024/07/69.pdf>.
400. COOPER, MARK. SURFACE AREA-TO-VOLUME RATIO IS RELATED TO LOWEST NUMBER OF DAILY HOURS OF SUNSHINE IN *CENTROBOLUS* COOK, 1897. Int. j. eng. sci. invention res. dev. 2024; 11(1): 215-232. <https://www.ijesird.com/wp-content/uploads/2024/07/68.pdf>.
401. Cooper, M. I. FEMALE SURFACE AREA-TO-VOLUME RATIO IS RELATED TO MINIMUM TEMPERATURE IN *CENTROBOLUS* COOK, 1897. Int. j. eng. sci. invention res. dev. 2024; 11(1): 197-214. <https://www.ijesird.com/wp-content/uploads/2024/07/67.pdf>.
402. Cooper, M. I. SURFACE AREA-TO-VOLUME RATIO IS RELATED TO TEMPERATURE IN *CENTROBOLUS* COOK, 1897. Int. j. eng. sci. invention res. dev. 2024; 11(1): 179-196. https://www.ijesird.com/wp-content/uploads/2024/07/66_1.pdf.
403. Cooper, M. I. SURFACE AREA TO VOLUME RATIO CORRELATES WITH THE LOWEST AVERAGE TEMPERATURE AND POTENTIALLY ALSO SPECIES RICHNESS IN PILL MILLIPEDES *SPHAEROTHERIUM* BRANDT, 1833. Int. j. eng. sci. invention res. dev. 2024; 11(1): 106-125. <https://www.ijesird.com/wp-content/uploads/2024/07/65.pdf>.
404. Cooper, M. I. MALE SURFACE AREA TO VOLUME RATIO CORRELATES WITH FEMALE SURFACE AREA TO VOLUME RATIO AND POTENTIALLY ALSO SPECIES RICHNESS IN PILL MILLIPEDES *SPHAEROTHERIUM* BRANDT, 1833. Int. j. eng. sci. invention res. dev. 2024; 11(1): 85-105. <https://www.ijesird.com/wp-content/uploads/2024/07/64.pdf>.
405. Cooper, M. I. MALE SURFACE AREA TO VOLUME RATIO CORRELATES WITH THE LOWEST AVERAGE TEMPERATURE AND POTENTIALLY ALSO SPECIES RICHNESS IN PILL MILLIPEDES *SPHAEROTHERIUM* BRANDT, 1833. Int. j. eng. sci. invention res. dev. 2024; 11(1): 61-84. <https://www.ijesird.com/wp-content/uploads/2024/07/63.pdf>.
406. Cooper, M. I. MEAN ANNUAL TEMPERATURE VARIES WITH THE HIGHEST AVERAGE TEMPERATURE IN DETERMINING THE SIZE OF FEMALE PILL MILLIPEDES *SPHAEROTHERIUM* BRANDT, 1833. Int. j. eng. sci. invention res. dev. 2024; 11(1): 41-60. <https://www.ijesird.com/wp-content/uploads/2024/07/62.pdf>.
407. Cooper, M. I. MEAN ANNUAL TEMPERATURE VARIES WITH THE LOWEST AVERAGE TEMPERATURE IN DETERMINING THE SIZE OF FEMALE PILL MILLIPEDES *SPHAEROTHERIUM* BRANDT, 1833. Int. j. eng. sci. invention res. dev. 2024; 11(1): 21-40. <https://www.ijesird.com/wp-content/uploads/2024/07/61.pdf>.
408. Cooper, M. I. THE DRIEST MONTHS VARIES WITH THE DISTANCE TO THE CLOSEST AIRPORT ACROSS THE DISTRIBUTION OF PILL MILLIPEDES *SPHAEROTHERIUM* BRANDT, 1833. Int. j. eng. sci. invention res. dev. 2024; 11(1): 1-20. <https://www.ijesird.com/wp-content/uploads/2024/07/60.pdf>.
409. Cooper, M. I. SURFACE AREA-TO-VOLUME RATIO IS RELATED TO HIGHEST TOTAL HOURS OF SUNSHINE IN A MONTH IN *CENTROBOLUS* COOK, 1897. Int. j. eng. sci. invention res. dev. 2024; 11(1): 161-178. https://www.ijesird.com/wp-content/uploads/2024/07/july_4_24.pdf.

410. Cooper, M. I. SURFACE AREA-TO-VOLUME RATIO IS RELATED TO HOURS OF SUNSHINE THROUGHOUT THE YEAR IN *CENTROBOLUS* COOK, 1897. Int. j. eng. sci. invention res. dev. 2024; 11(1): 143-160. https://www.ijesird.com/wp-content/uploads/2024/07/july_3_24.pdf.
411. Cooper, M. I. STERNITE PROMINENCE IS RELATED TO LOWEST RELATIVE HUMIDITY IN *CENTROBOLUS* COOK, 1897. Int. j. eng. sci. invention res. dev. 2024; 11(1): 126-142. https://www.ijesird.com/wp-content/uploads/2024/07/july_2_24.pdf.
412. Cooper, M. Ian. COPULATION DURATION IS MODELLED TO ALTITUDE IN FOREST RED MILLIPEDES *CENTROBOLUS* COOK, 1897. Int. j. eng. sci. invention res. dev. 2024; 11(1): 307-326. <https://www.ijesird.com/wp-content/uploads/2024/07/73.pdf>.
413. Cooper, M. Ian. COPULATION DURATION IS RELATED TO MAXIMUM PRECIPITATION IN FOREST RED MILLIPEDES *CENTROBOLUS* COOK, 1897. Int. j. eng. sci. invention res. dev. 2024; 11(1): 286-306. <https://www.ijesird.com/wp-content/uploads/2024/07/72.pdf>.
414. COOPER, MARK I. TEMPERATURE IS RELATED TO LONGITUDE IN FOREST RED MILLIPEDES *CENTROBOLUS* COOK, 1897. Int. j. eng. sci. invention res. dev. 2024; 11(2): 371-391. <https://www.ijesird.com/wp-content/uploads/2024/08/76>.
415. COOPER, MARK I. PRECIPITATION IS RELATED TO LONGITUDE IN FOREST RED MILLIPEDES *CENTROBOLUS* COOK, 1897. Int. j. eng. sci. invention res. dev. 2024; 11(2): 349-370. <https://www.ijesird.com/wp-content/uploads/2024/08/75>.
416. COOPER, MARK I. PRECIPITATION IS RELATED TO LATITUDE IN FOREST RED MILLIPEDES *CENTROBOLUS* COOK, 1897. Int. j. eng. sci. invention res. dev. 2024; 11(2): 327-348. <https://www.ijesird.com/wp-content/uploads/2024/08/74>.
417. COOPER, MARK. HOURS OF SUNSHINE THROUGHOUT THE YEAR IS RELATED TO LONGITUDE IN FOREST RED MILLIPEDES *CENTROBOLUS* COOK, 1897. Int. j. eng. sci. invention res. dev. 2024; 11(2): 435-456. <https://www.ijesird.com/wp-content/uploads/2024/08/79.pdf>.
418. COOPER, M. DISTANCE TO THE NEAREST AIRPORT IS RELATED TO LATITUDE IN FOREST RED MILLIPEDES *CENTROBOLUS* COOK, 1897. Int. j. eng. sci. invention res. dev. 2024; 11(2): 414-434. <https://www.ijesird.com/wp-content/uploads/2024/08/78.pdf>.
419. COOPER, MARK. SPECIES RICHNESS IS NOT RELATED TO DISTANCE TO THE NEAREST AIRPORT IN FOREST RED MILLIPEDES *CENTROBOLUS* COOK, 1897. Int. j. eng. sci. invention res. dev. 2024; 11(2): 392-413. <https://www.ijesird.com/wp-content/uploads/2024/08/77.pdf>.
420. COOPER, MARK IAN. DISTANCE TO THE NEAREST AIRPORT IS RELATED TO THE MONTH WITH THE HIGHEST NUMBER OF RAINY DAYS IN FOREST RED MILLIPEDES *CENTROBOLUS* COOK, 1897. Int. j. eng. sci. invention res. dev. 2024; 11(2): 572-594. https://www.ijesird.com/wp-content/uploads/2024/08/aug_6_2024.pdf.
421. COOPER, MARK IAN. STERNITE PROMINENCE IS RELATED TO ABUNDANCE IN *CENTROBOLUS* COOK, 1897. Int. j. eng. sci. invention res. dev. 2024; 11(2): 548-571. https://www.ijesird.com/wp-content/uploads/2024/08/aug_5_2024.pdf.
422. COOPER, MARK IAN. DISTANCE TO THE NEAREST AIRPORT IS RELATED TO LONGITUDE IN FOREST RED MILLIPEDES *CENTROBOLUS* COOK, 1897. Int. j. eng. sci. invention res. dev. 2024; 11(2): 525-547. https://www.ijesird.com/wp-content/uploads/2024/08/aug_4_2024.pdf.
423. COOPER, MARK IAN. IS MATING FREQUENCY RELATED TO DISTANCE TO THE NEAREST AIRPORT IN FOREST RED MILLIPEDES *CENTROBOLUS* COOK, 1897? Int. j. eng. sci. invention res. dev. 2024; 11(2): 502-524. https://www.ijesird.com/wp-content/uploads/2024/08/aug_3_2024.pdf.
424. COOPER, MARK IAN. THE HIGHEST TOTAL HOURS OF SUNSHINE IN A MONTH IS RELATED TO LONGITUDE IN FOREST RED MILLIPEDES *CENTROBOLUS* COOK, 1897. Int. j. eng. sci. invention res. dev. 2024; 11(2): 479-501. https://www.ijesird.com/wp-content/uploads/2024/08/aug_2_2024.pdf.
425. COOPER, MARK IAN. IS MATING FREQUENCY RELATED TO HIGHEST RELATIVE HUMIDITY IN FOREST RED MILLIPEDES *CENTROBOLUS* COOK, 1897? Int. j. eng. sci. invention res. dev. 2024; 11(2): 457-478. https://www.ijesird.com/wp-content/uploads/2024/08/aug_1_2024.pdf.
426. R. F. Lawrence, "The Spiroboloidea (Diplopoda) of the eastern half of Southern Africa*," *Annals of the Natal Museum*, vol. 18, no. 3, pp. 607-646, 1967.
427. R. P. Mailula, "Taxonomic revision and Red List assessment of the red millipede genus *Centrobolus* (Spirobolida: Pachybolidae) of South Africa," *The University of Kwazulu Natal*, pp. 289, 2021.

APPENDIX 1. Hours of sunshine throughout the year across the range of *Centrobolus* Cook, 1897.

2690.72
2709.47
2740.74
3145.74

2846.04	31.084
2815.76	31.400
2703.13	18.357
2699.92	19.350
2709.47	32.049
2583.18	34.394
2864.06	30.754
3087.04	30.666
2646.85	30.393
2815.76	25.173
2654.59	18.348
2702.09	28.433
2864.06	32.078
2682.25	30.456
3126.58	31.952
2841.89	25.396
3070.45	28.317
2564.32	20.383

APPENDIX 2. The average monthly duration of sunlight across the range of *Centrobolus* Cook, 1897.

97.29	30.867
89.08	29.418
90.08	30.451
103.49	
93.61	
92.58	
88.86	
88.76	
89.08	
84.89	
98.18	
101.57	
86.96	
92.58	
87.26	
88.83	
98.18	
87.89	
102.83	
93.41	
100.95	
84.27	

APPENDIX 3. Longitude across the range of *Centrobolus* Cook, 1897.

30.786	1089
--------	------

APPENDIX 4. Precipitation across the range of *Centrobolus* Cook, 1897.

919
893
962
498
408
944
1266
1015
893
966
497
621
1050
944
945
837
497
956
401
1200
265
1089

APPENDIX 5. Minimum temperature across the range of *Centrobolus* Cook, 1897.

14.5
19.9
14.8
11.4
11.5
19.8
21.6
18.7
20.5
15.3
17.7
11.4
15.7
19.8
19.7
22.2
16.6
13.6
15.0
19.4
9.5
19.0

APPENDIX 6. Temperature across the range of *Centrobolus* Cook, 1897.

15.9
20.4
16.6
16.4
16.9
21.9
22.8
19.5
16.6
16.7
17.0
16.4
19.5
21.9
20.1
22.0
18.6
19.0
17.0
17.0

15.0
19.7

APPENDIX 7. Lowest daily hours of sunshine across the range of *Centrobolus* Cook, 1897.

8.18
6.73
7.33
11.04
9.47
6.97
7.63
6.63
6.73
6.35
8.81
10.85
6.44
6.97
6.44
6.52
8.81
8.81
10.10
7.64
8.87
6.07

APPENDIX 8. Curved surface area (mm²) in male *Centrobolus* Cook, 1897.

980.177
2297.861
1215.796
1030.442
1633.628
1764.318
1447.018
2483.743
1130.973
1269.832
2064.655
746.442
980.177
1927.681
1822.124
1662.531
1908.832
1271.717

721.31	1972.92
1078.195	1845.75
1272.345	2150.36
2450.442	1393.36
APPENDIX 9. Curved surface area (mm ²) in female <i>Centrobolus</i> Cook, 1897. (Curved surface area at low species richness denoted low in parentheses).	826.93
1884.956	1199.84
2817.38	1399.58
818.071	2676.64
939.965	2111.15
1890.61	3026.01
2221.734	928.91
2638.938	1061.61
2652.133	2109.33
1404.92	2512.27
1594.044	2946.81
3325.062	2934.19
559.832	1574.82
1432.566	1812.76
1727.876	3768.40
2376.301	628.26
2356.194	1636.71
2111.15	1917.94
1327.009	2621.60
783.513	2709.62
1193.805	2419.03
1208.885	1471.77
3245.894	899.69
APPENDIX 10. Surface area (mm ²) in <i>Centrobolus</i> Cook, 1897.	1350.89
1080.71	1378.78
2462.87	3668.38
1343.03	APPENDIX 11. Length (mm) in <i>Centrobolus</i> Cook, 1897.
1130.97	50
1790.71	76
1934.22	31
1585.81	34
2717.29	51
1258.21	52
1408.63	60
2306.18	63
827.87	43
1080.71	43
2098.58	63
	27
	40
	50

62	251.38
50	250.72
48	195.55
44	250.72
29	312.99
38	258.55
37	274.85
63	188.32
39	
69	
43	
41	
52	
54	
49	
67	
40	
43	
53	
33	
39	
59	
58	
49	
49	
46	
28	
39	
45	
65	

APPENDIX 12. Highest total hours of sunshine in a month in *Centrobolus* Cook, 1897.

259.73	19.4
248.89	24.2
256.60	
342.21	
293.68	
209.20	
247.85	
250.86	
248.89	
247.77	
250.72	
336.32	
247.65	
209.20	

APPENDIX 13. Maximum temperature in *Centrobolus* Cook, 1897.

24.7
25.4
25.6
15.7
16.6
25.5
29.0
25.0
25.5
24.8
24.8
15.7
25.6
25.5
24.6
27.9
26.1
24.8
28.3
29.5

APPENDIX 14. Volume in *Centrobolus* Cook, 1897.

952
1894
557
522
1210
1518
1580
2043
775
962
2046
284

756	0.00645, 89.08
1221	0.066, 88.76
1451	0.054, 88.76
1666	0.0744, 88.76
1659	0.0456, 88.76
749	0.072, 88.76
393	0.048, 88.76
669	0.0396, 88.76
781	0.0804, 88.76
2683	

APPENDIX 15. Minimum ocean temperature (degrees Celsius) followed by average monthly duration of sunlight (h) in coastal *Centrobolus* Cook, 1897.

20.80, 89.08
14.50, 103.49
15.20, 93.61
21.00, 92.58
21.10, 88.76
14.30, 101.57
21.00, 92.58
21.20, 87.26
20.80, 84.27

APPENDIX 16. Mean ocean temperature (degrees Celsius) followed by average monthly duration of sunlight (h) in coastal *Centrobolus* Cook, 1897.

23.20, 89.08
15.90, 103.49
17.30, 93.61
23.50, 92.58
23.50, 88.76
15.80, 101.57
23.50, 92.58
23.60, 87.26
23.20, 84.27

APPENDIX 17. Mating frequency followed by average monthly duration of sunlight (h) in coastal *Centrobolus* Cook, 1897.

0, 89.08
0, 89.08
0.0165, 89.08
0.0135, 89.08
0.0093, 89.08
0.0057, 89.08
0.00855, 89.08